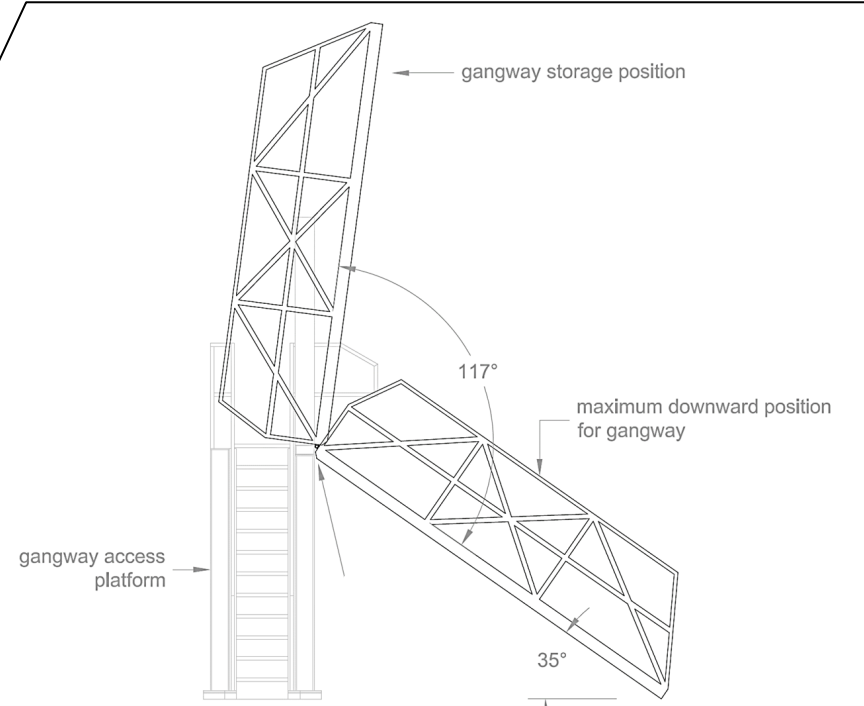


# CASHMAN

## Innovative Scow Boarding System



Aiden Horan  
February 26, 2021



[www.jaycashman.com/innovation](http://www.jaycashman.com/innovation)

## OUTLINE:

- Background
- Problem Statement
- Approach
- Solution
- Review

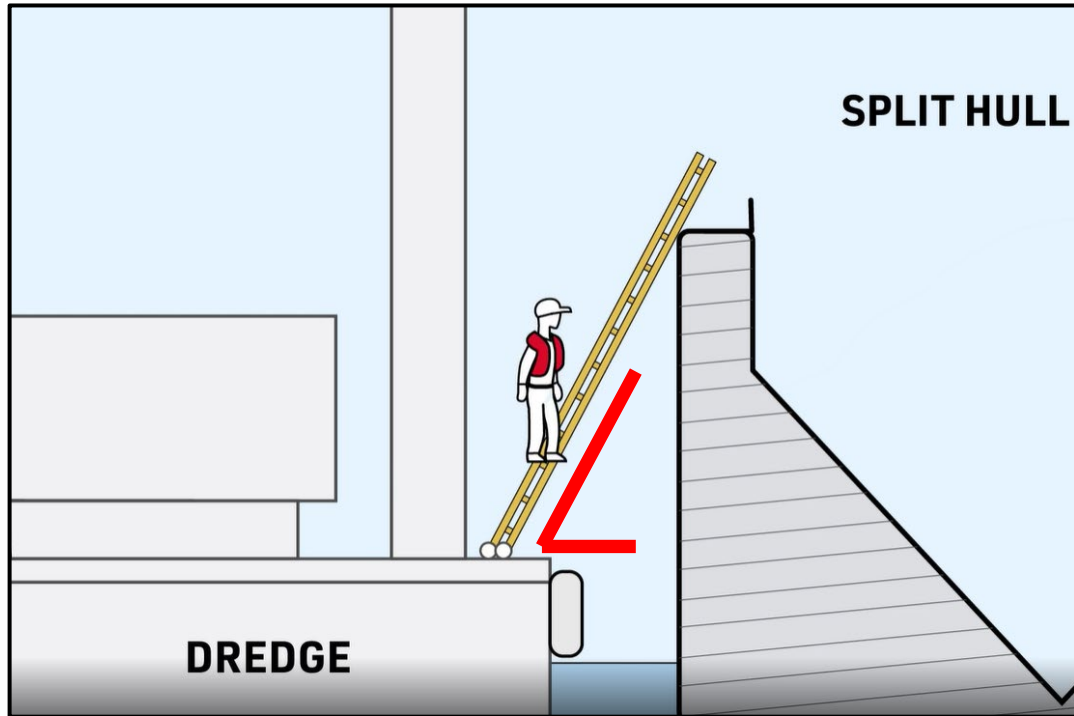


## BACKGROUND:

- Boston Harbor Deepening
- 12 million yd<sup>3</sup> (~9.2 MM m<sup>3</sup>)
- Challenge: Find Operational improvements/innovations
  - Safety
  - Efficiency
  - Quality
- Gangways just one example

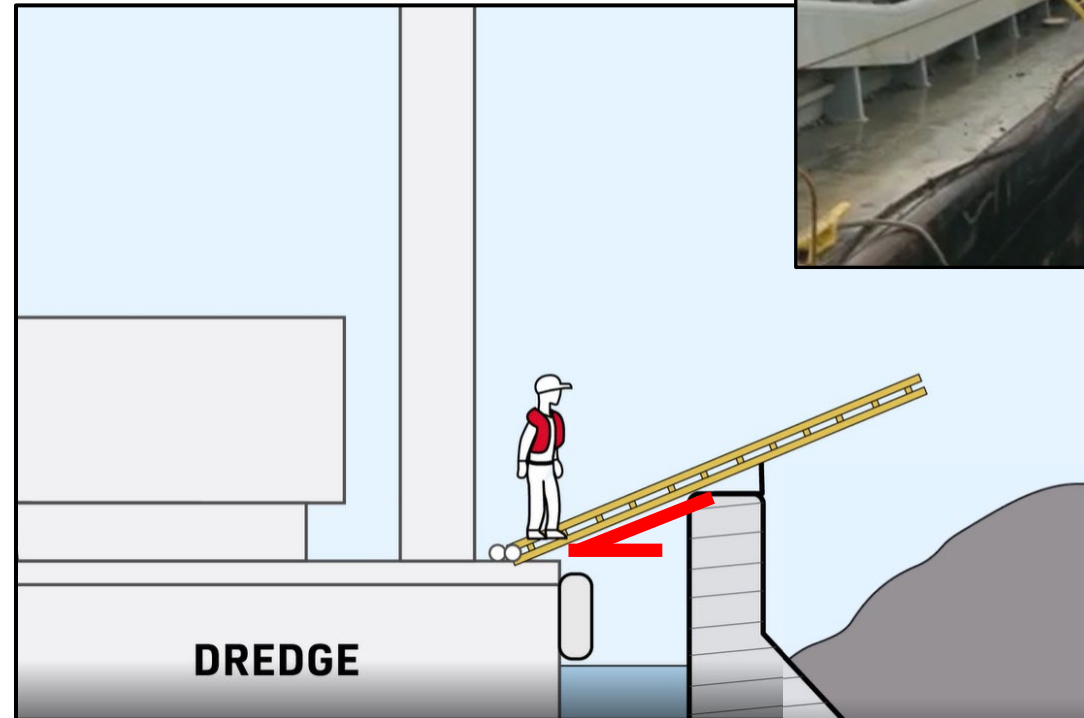


## PROBLEM STATEMENT:



**Upper Boundary Condition:  
Empty Scow**

## Lower Boundary Condition: Loaded Scow



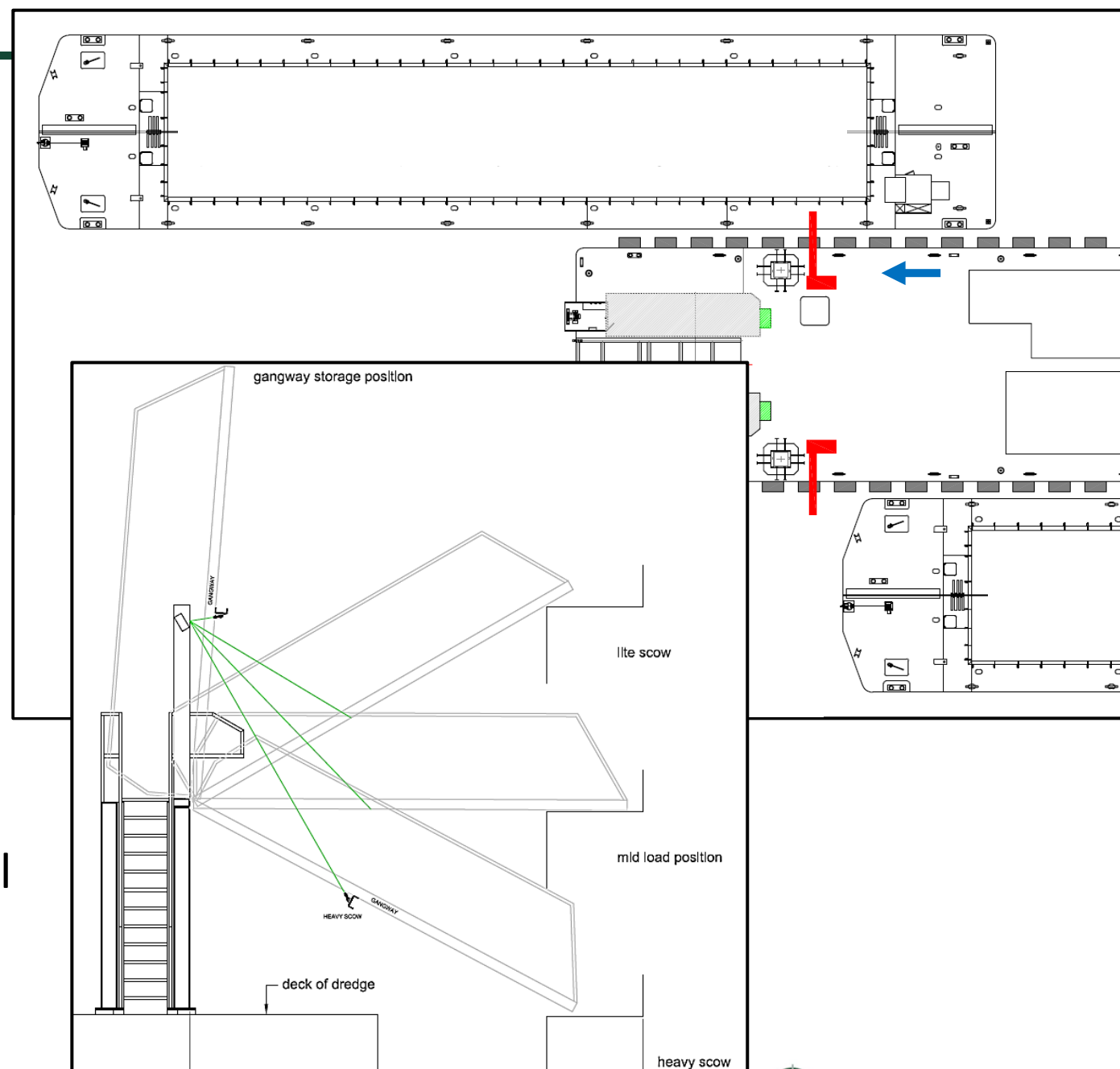
*“Develop a scow boarding system that can provide safe and continual access when required to scows at various drafts when alongside a dredge”*



## SOLUTION:

- Requirements:-

1. Safety of personnel
2. Simple construction
3. Work in corrosive marine environment
4. Safe in inclement weather
5. Safe in various sea states
6. Standardize across our mechanical dredging fleet
7. Minimize deck space used
8. Not affect normal dredging operations



# SOLUTION:



# SOLUTION:





## SOLUTION:

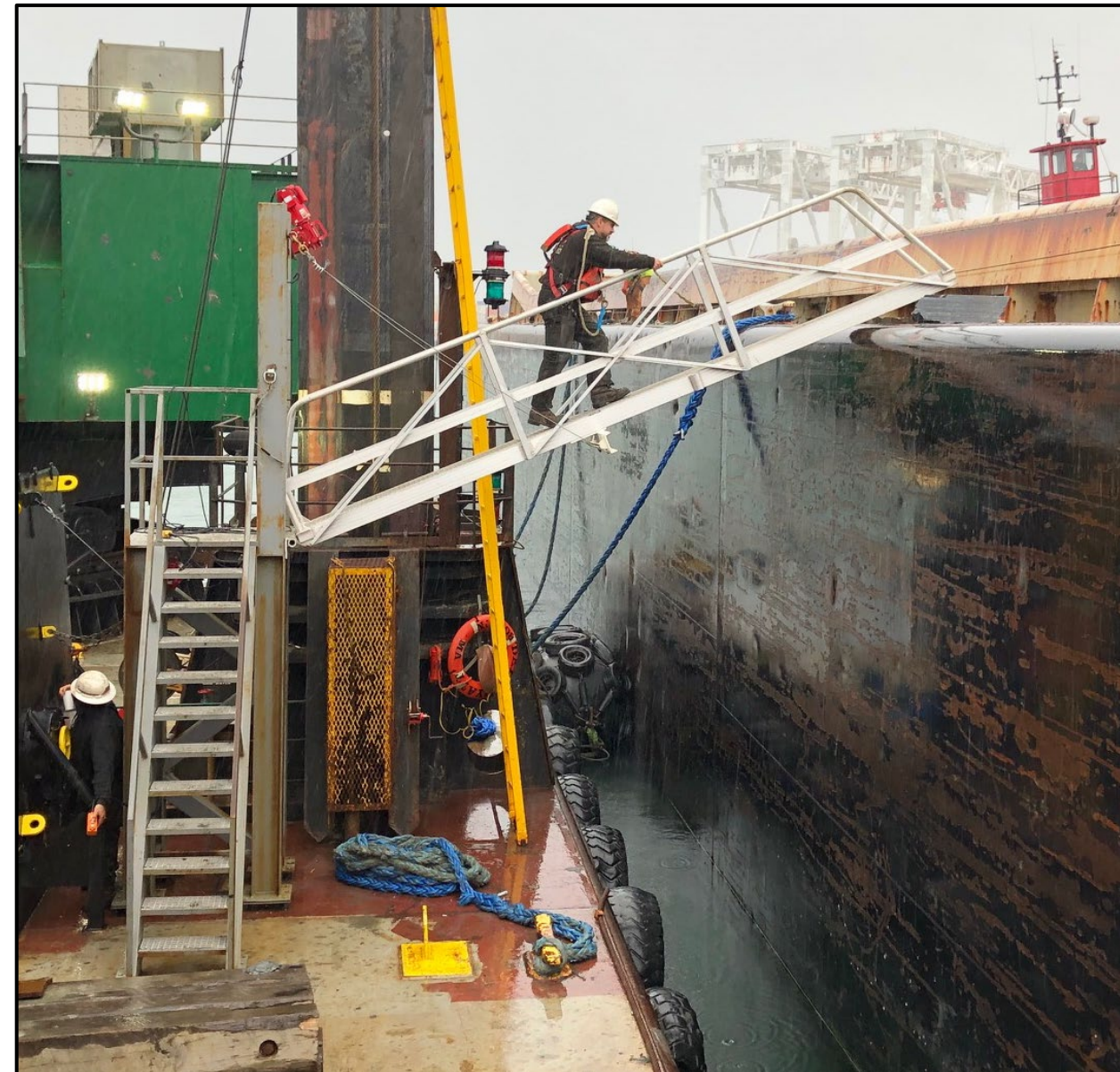


## REVIEW:

- Initialized safe system of work
- Initial functionality refinements
- Reinforcing high stress locations
- Understanding maintenance requirements
- Successful adoption in field

*“These gangways have extended my dredging career by 15 years”*

*Mate, Dale Pyatt Dredge, Spring 2019*



# THANK YOU !

- Questions



## Cashman Dredging & Marine Contracting

549 South Street,  
Quincy, MA, 02169, USA

P: +1 617.890.0600 | F: +1  
617.890.0606

[info@jaycashman.com](mailto:info@jaycashman.com)

[www.jaycashman.com/innovation](http://www.jaycashman.com/innovation)