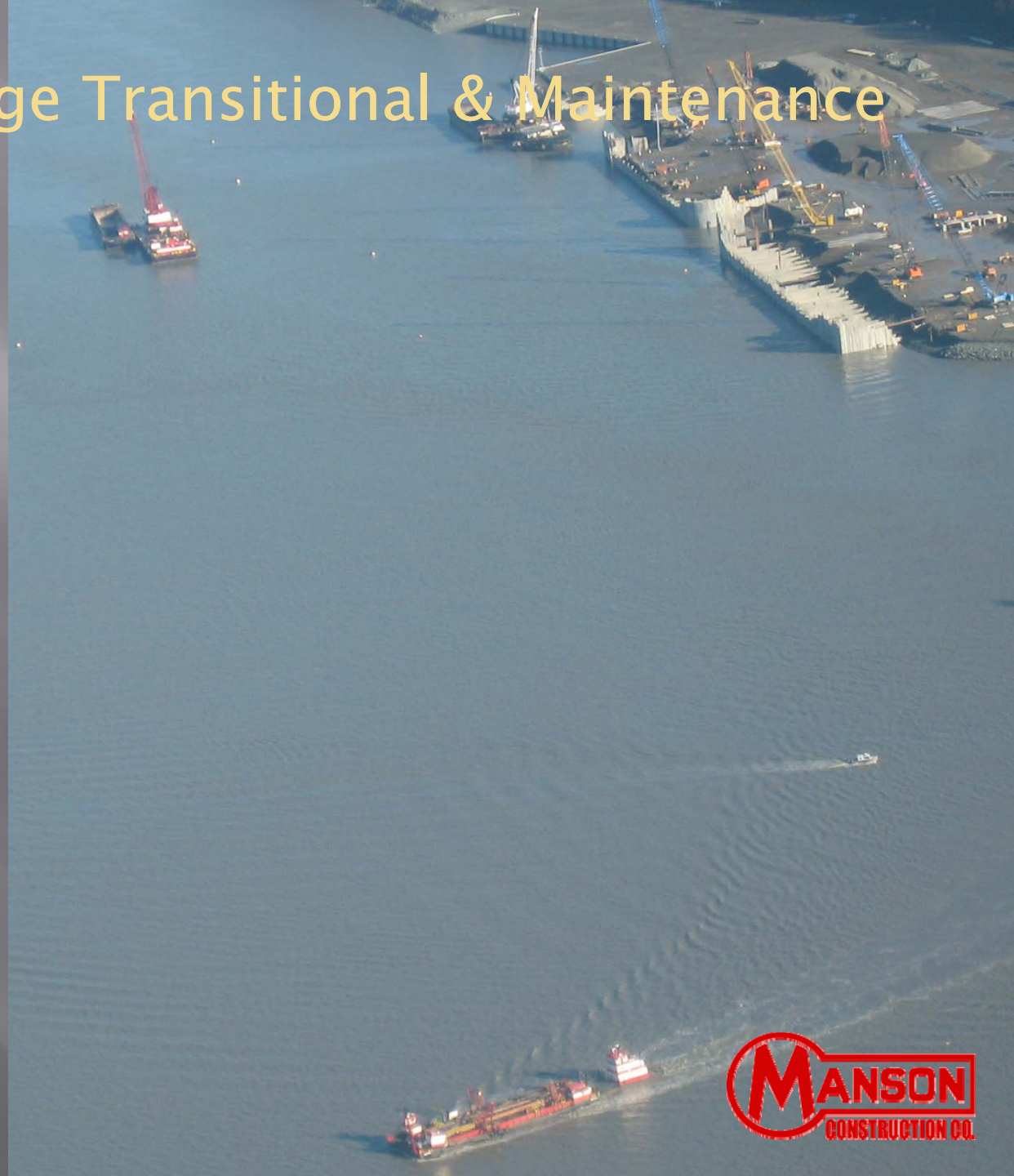


Port of Anchorage Transitional & Maintenance Dredging



Port of Anchorage Transitional & Maintenance Dredging

- Safety - Anchorage, AK
- Anchorage, AK
- Maintenance Dredging
- Transitional Dredging



Safety

• Fall Temperatures

- October 2006 & 2010 the temperature dropped to single digits.
- Ice on the decks

• Access

- Boarding vessels from either a dock or an assist vessel

• Water Temperature

- Hypothermia can set in quickly

• Silt in the Water

- Can get into your clothes and weigh you down

• Fast Currents

- Landing barges
- Landing assist vessels
- If you fall overboard you could travel a long distance before rescue



Extreme Tides



Tides can change from a -4.5 to a +34

Stages of the Tide



Winter 06 Tidal Change

Photo taken every 10 minutes throughout the tide cycle.



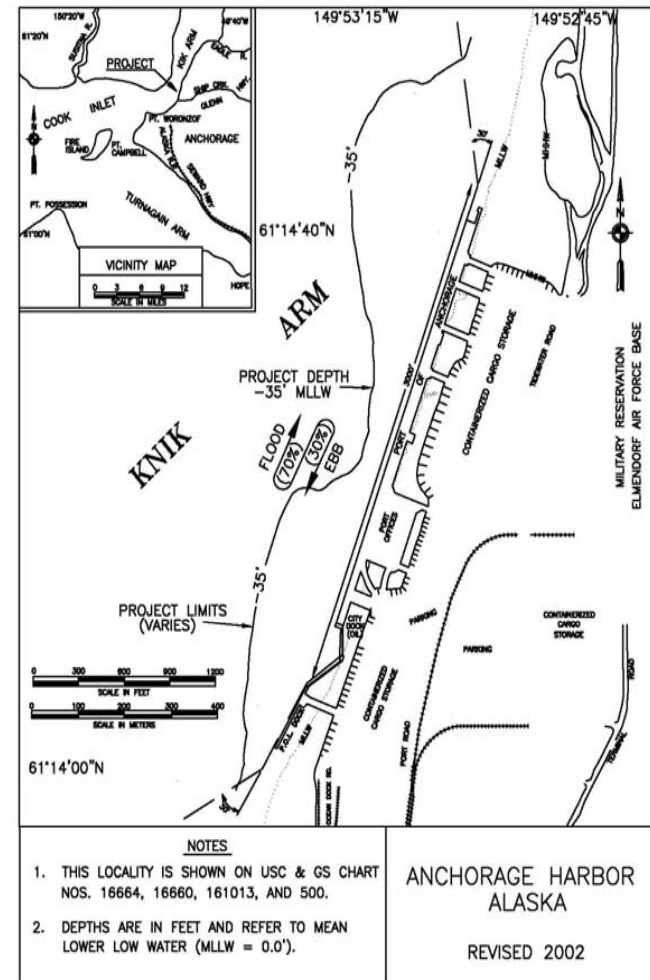
Extreme & Unusual Currents

- After the Port Expansion began there was a noticeable change in the directions of the currents.
- The currents dictated the routes of the hopper dredge
 - Often times requiring mid load direction modifications.
- There is a lot of current in the Transitional Dredge Area.

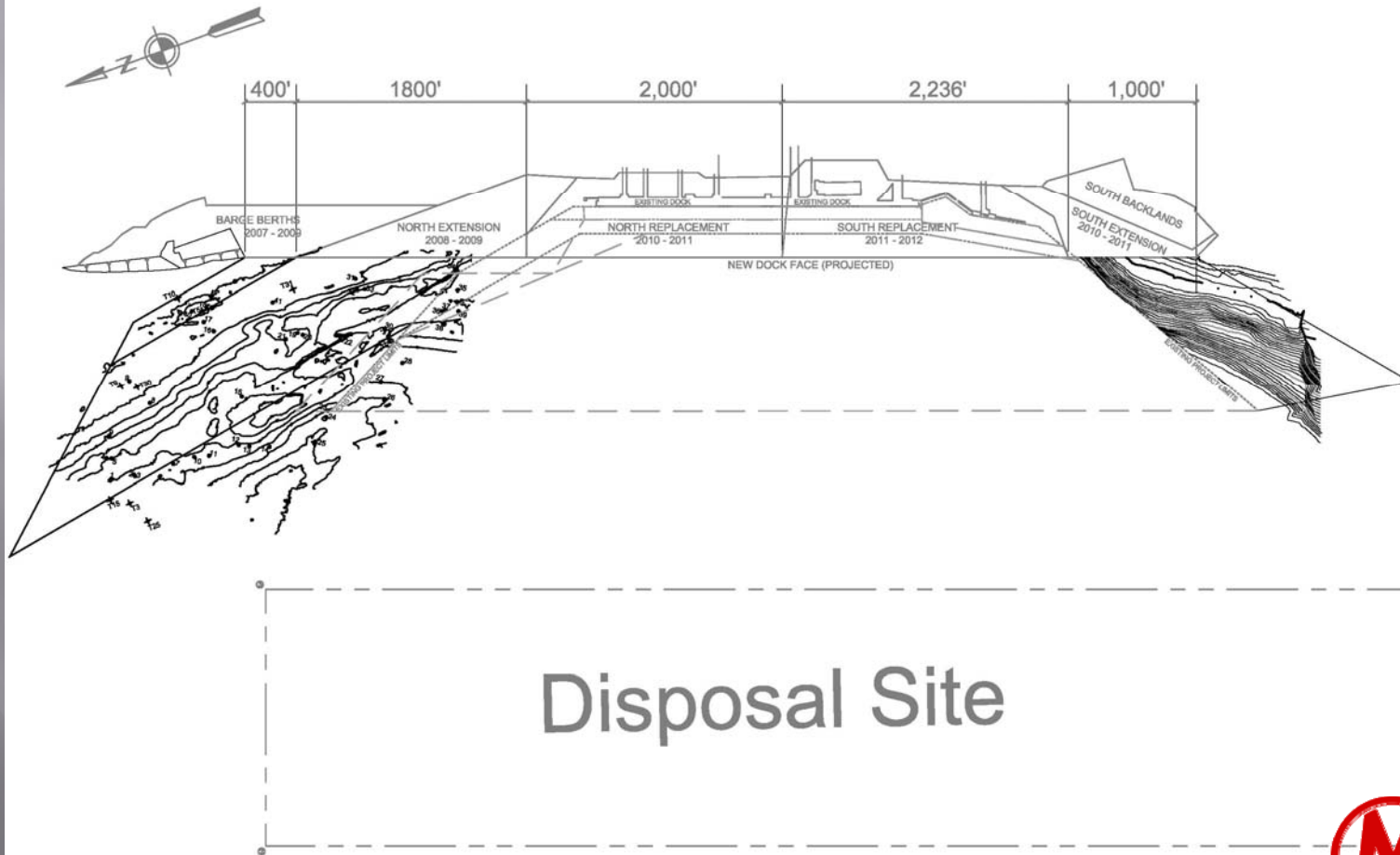


Logistics

- Sunday & Tuesday
 - Horizon Lines
 - Tote
- 2 Weeks on / 2 Weeks off
 - Cement Ships
- As needed
 - Military Vessels
 - Coastguard Training
- Random
 - Fuel Barges
- The Military Vessels require a large no entry zone
 - Hopper dredging ceases while military vessels are in port.

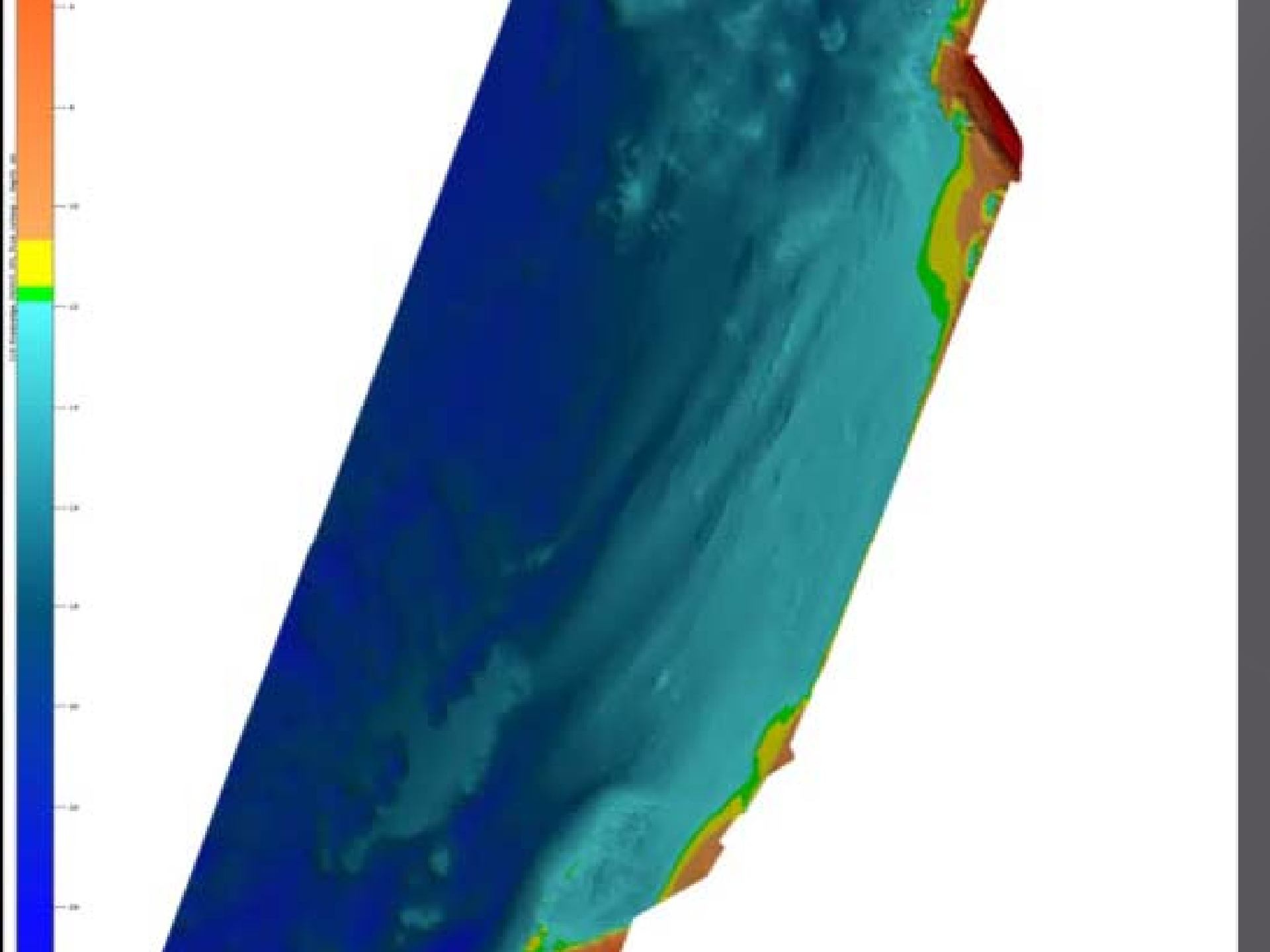


PORT OF ANCHORAGE BARGE BERTHS AND NORTH/SOUTH EXTENSIONS



Infill – The Big Gamble

- ▣ Historically infill can be as high as 25,000 CY / day
- ▣ May be periodic
- ▣ The last 2 years have left the hopper on standby as much as it was dredging
- ▣ The decrease in infill seems to have coincided with the port expansion



Westport Dredging



Vulcan & Jeffrey M.

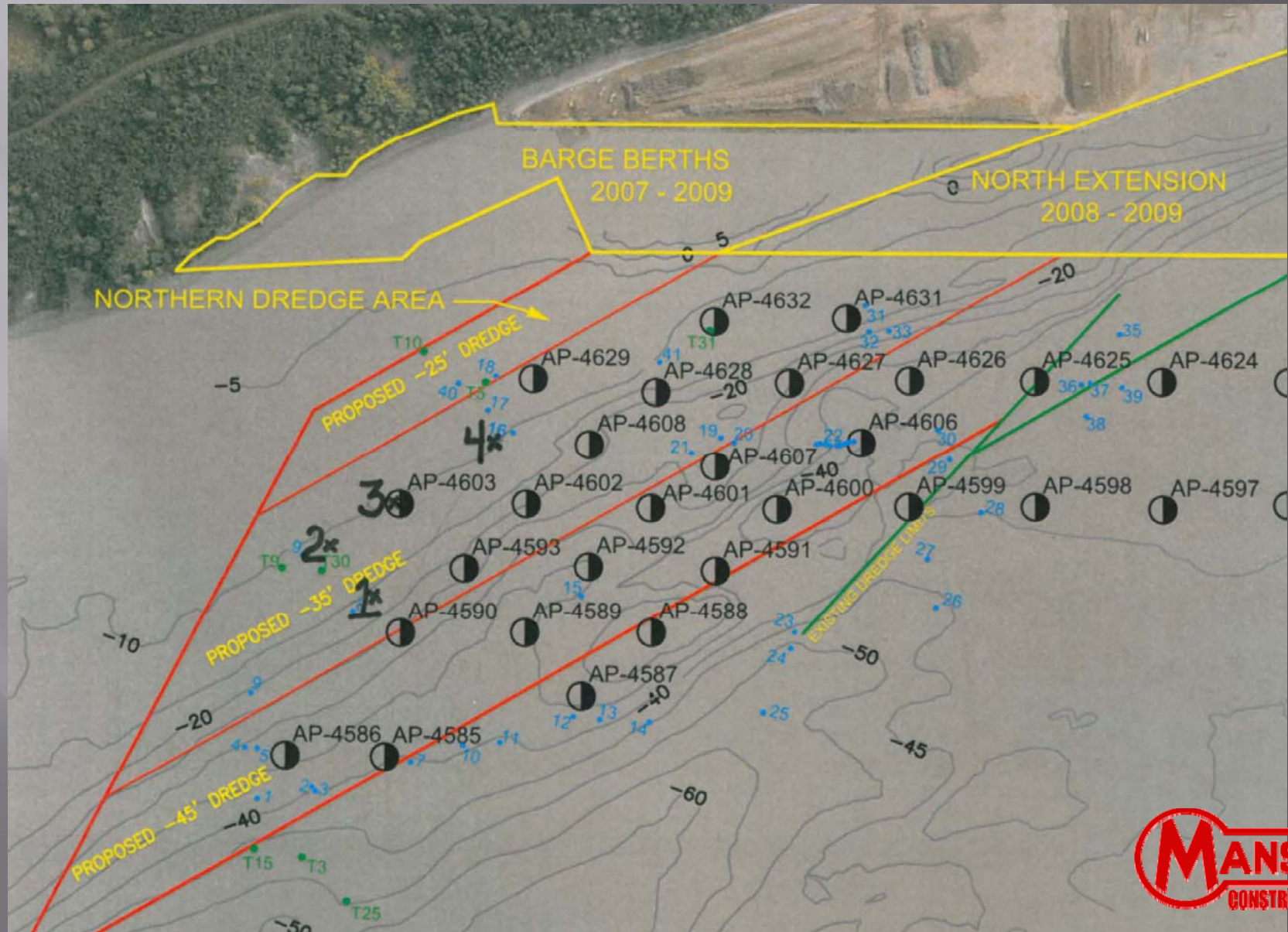


Transitional Dredging COE Pre-Solicitation Preparation

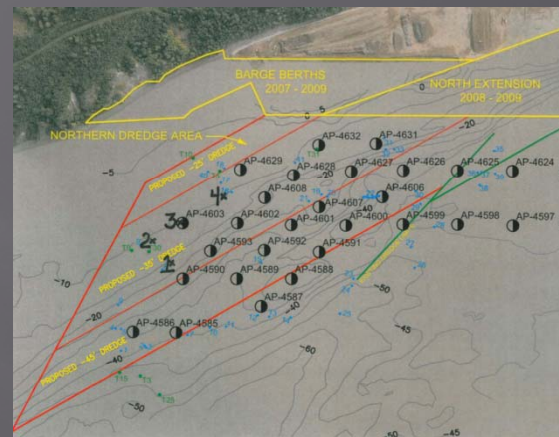
- ▣ Extensive Borings Taken
- ▣ Pre-Solicitation Meeting Held
- ▣ Partnering Meeting Held after Award

Test Holes

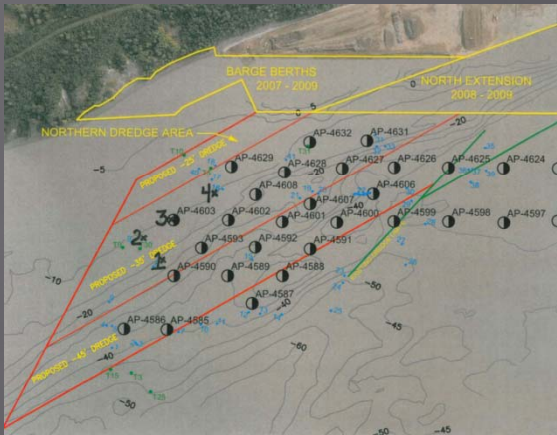
Completed towards the end of the 2009 dredge season



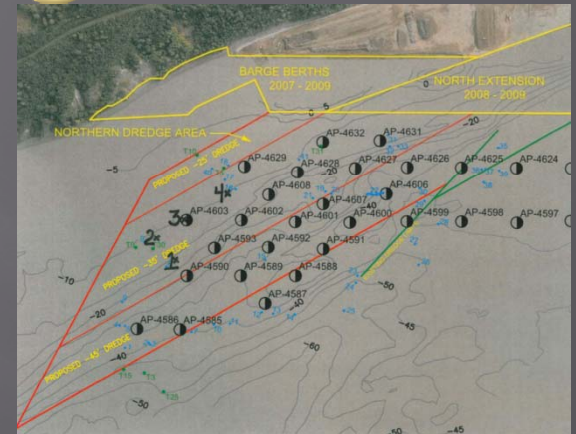
Test Hole #1



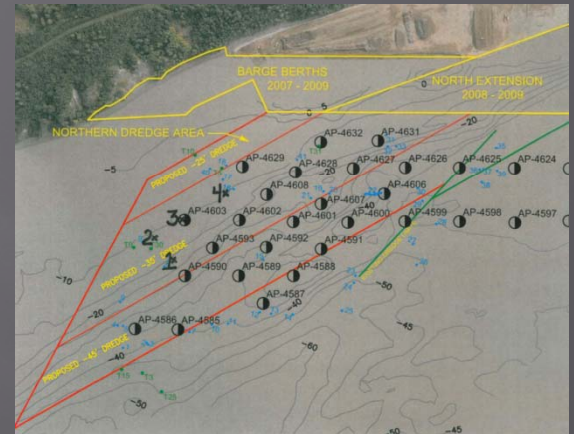
Test Hole #2



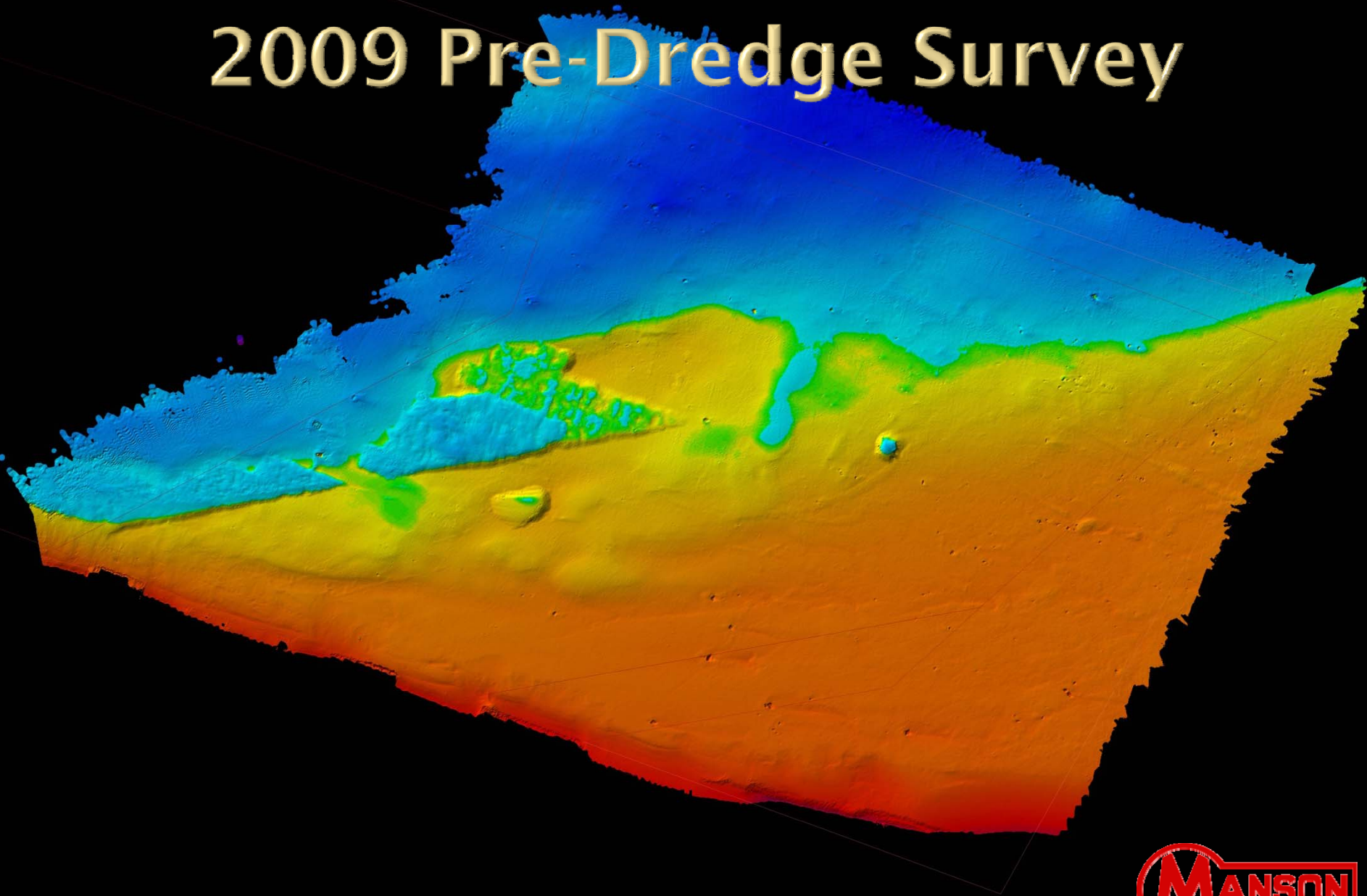
Test Hole #3 (boring 4603)



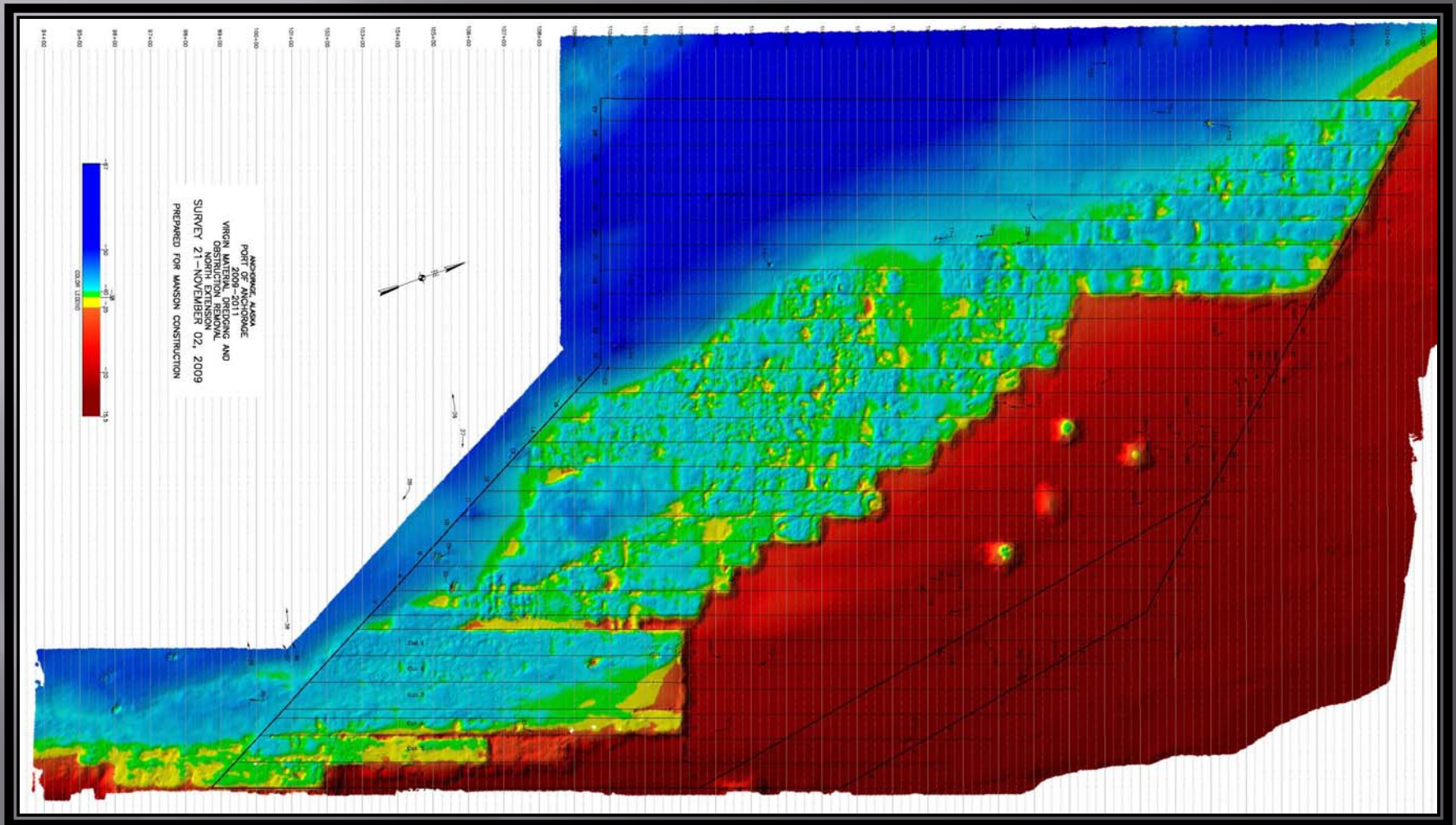
Test Hole #4



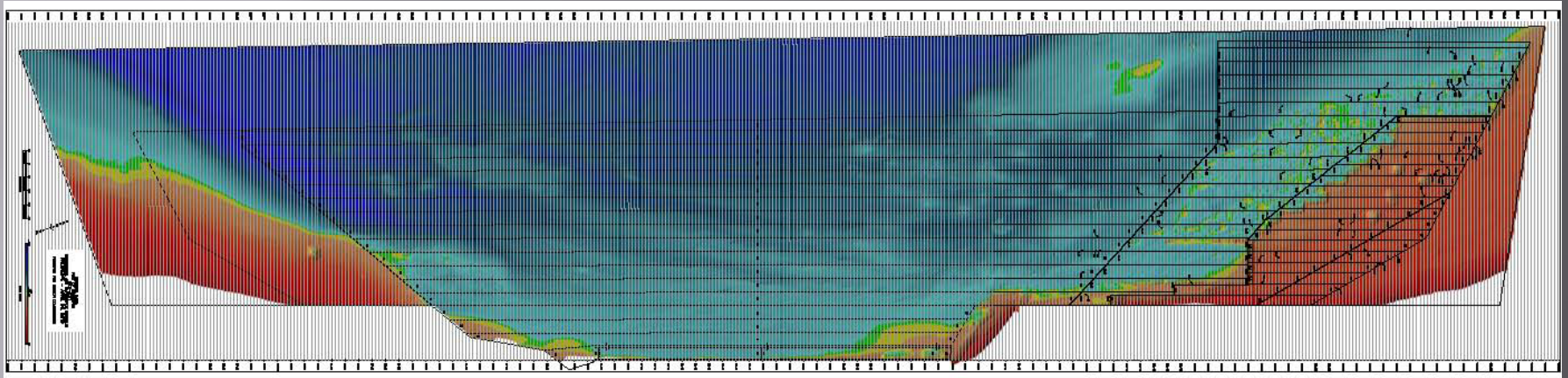
2009 Pre-Dredge Survey



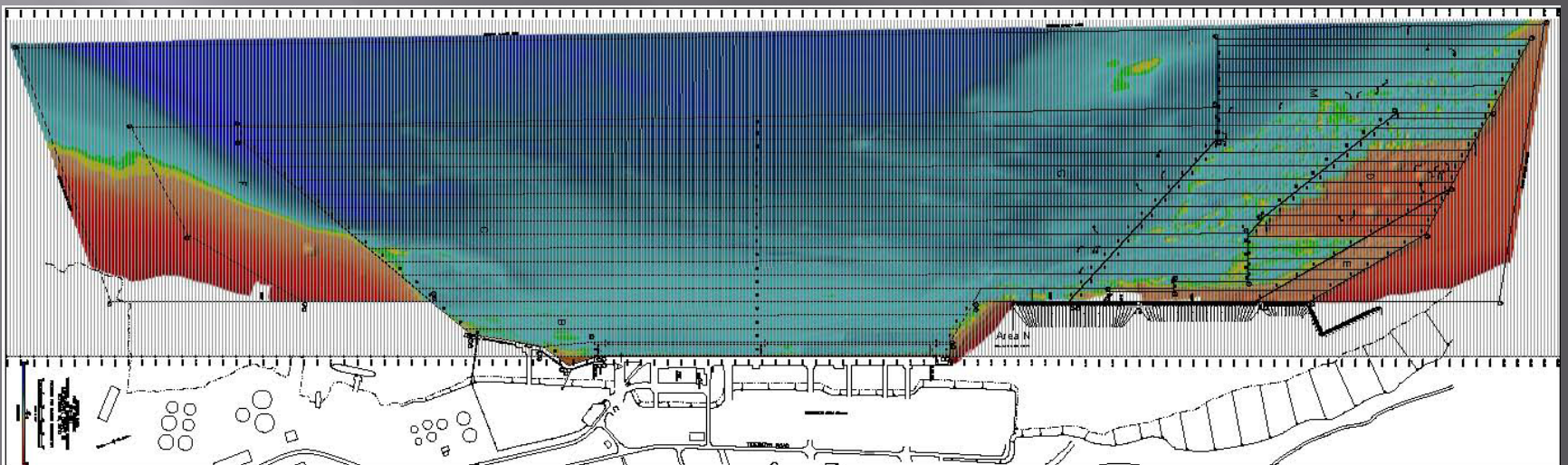
2009 Post Dredge Survey



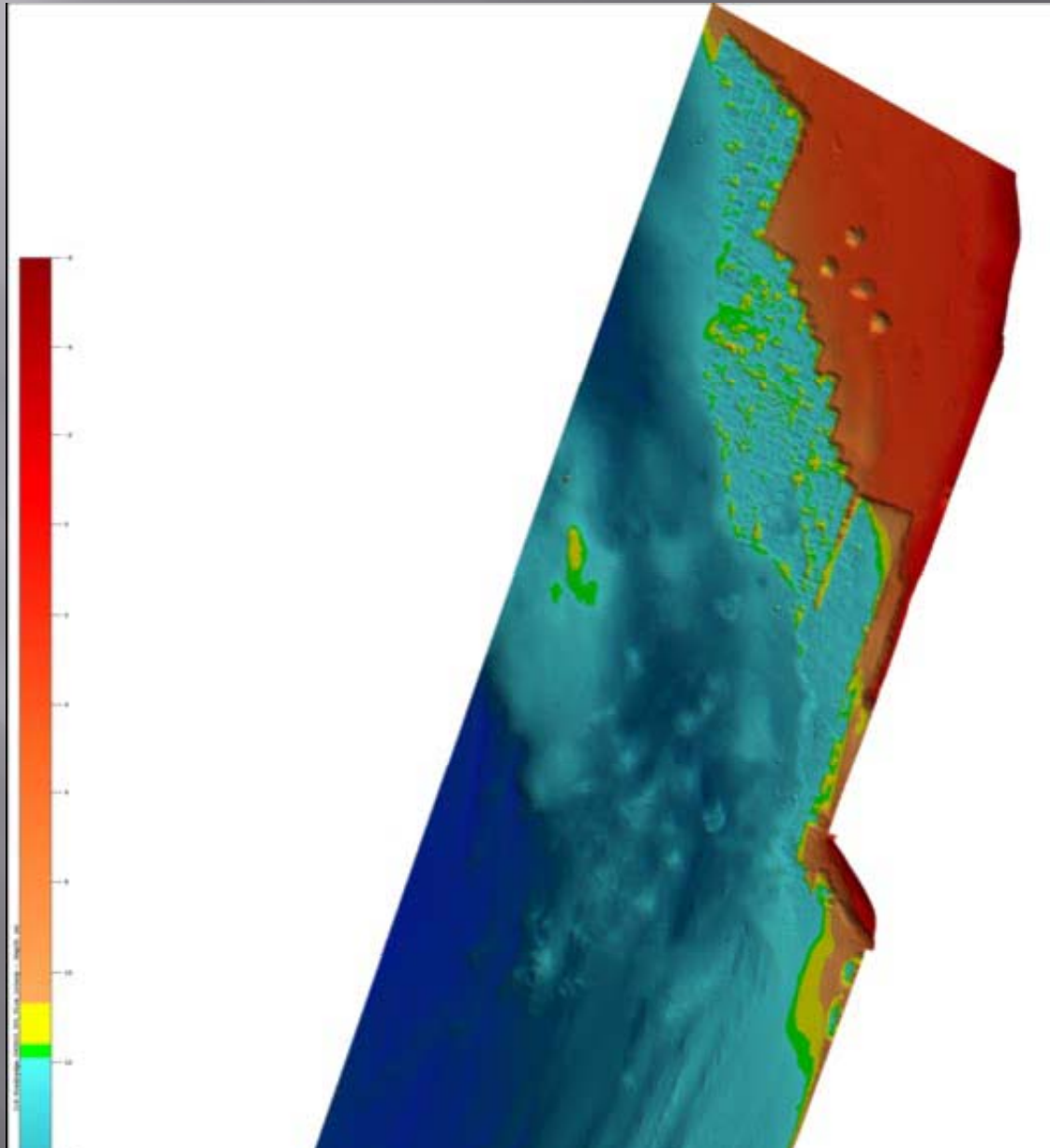
2010 PRE-DREDGE SURVEY



2010 OCTOBER 18 SURVEY



2010 Dredge Progression



Obstructions



Njord removing pill box from the North Expansion



Sandy Gravel with Cobbles

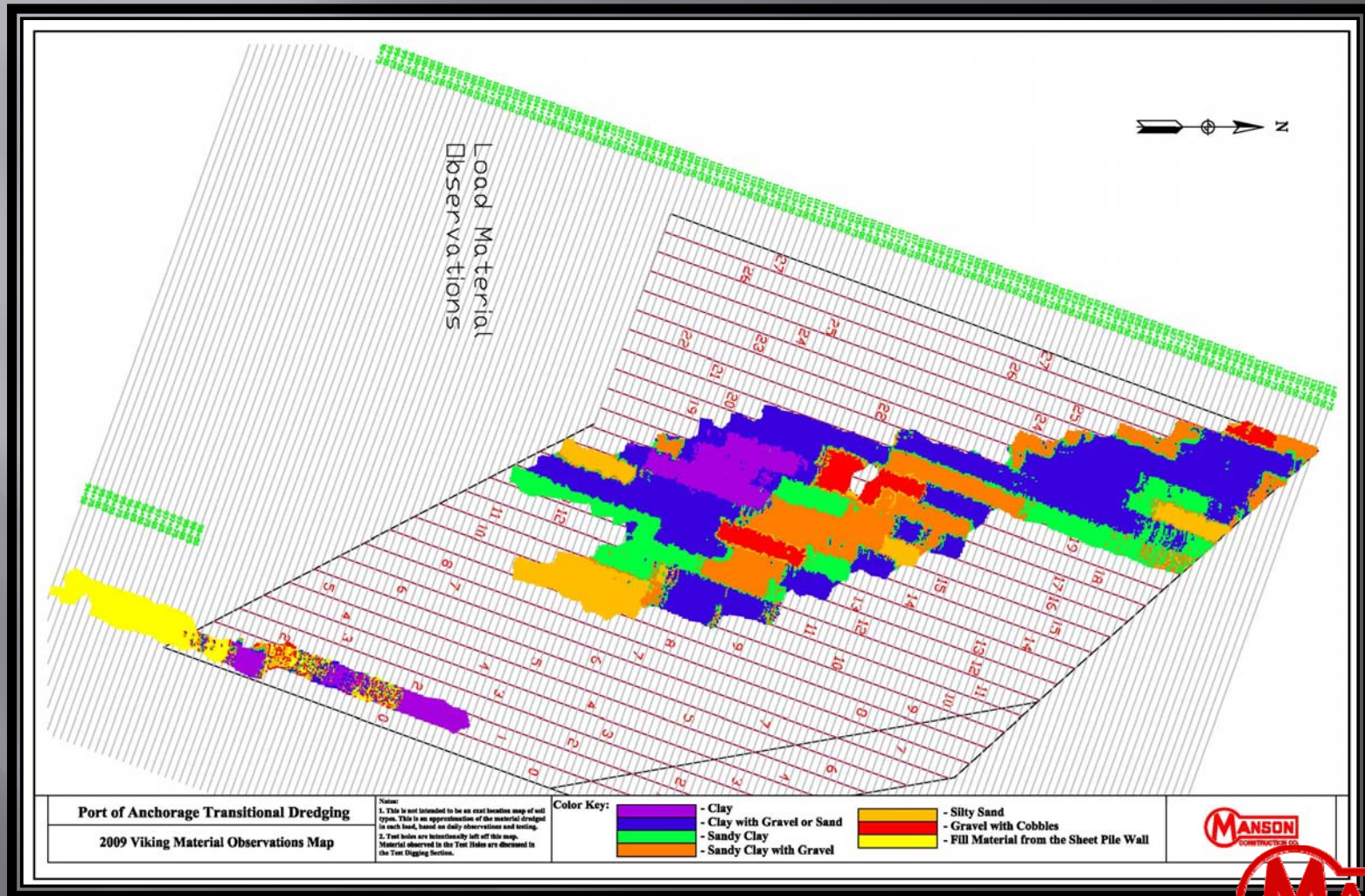


Dense Clay





Material Observed by Load



Dock Pass at T-3





Viking in North Expansion



Viking in North Expansion



Anchorage Not a Bad Place to Work



The real reason everyone volunteers to go to Alaska

