



## WEDA 2012

Presented by: Steven M. Cernak, P.E., PPM  
Chief Executive & Port Director

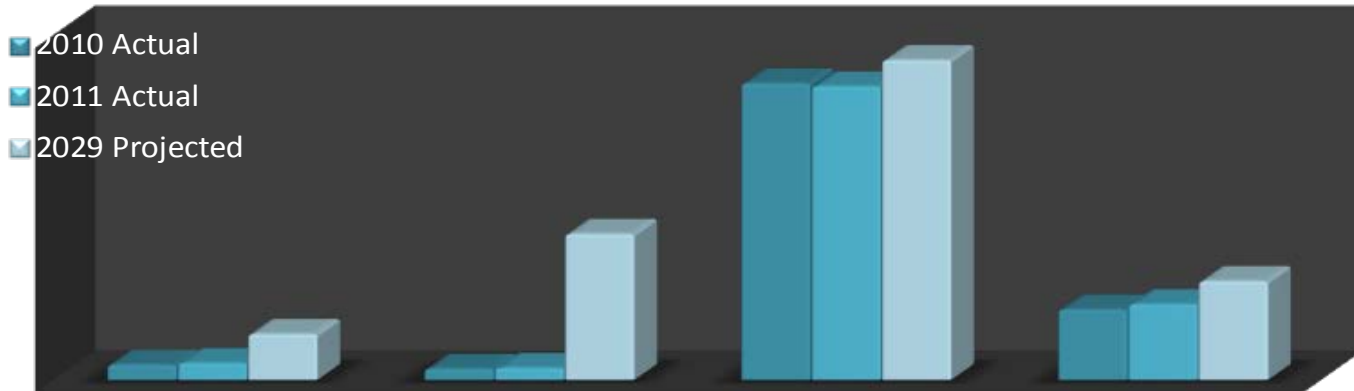




# Port Everglades Overview

- Second busiest cruise homeport in the world
- Florida's top seaport for international export trade
  - Total exports from Port Everglades = \$13.3 billion
  - Surplus (exports/imports) = \$3.3 billion
- No. 12 in the United States for international container cargo trade
- Distribution site for South Florida region's gasoline, jet fuel and other petroleum products
- Enterprise Fund of Broward County
  - Supported by user fees. No local taxpayer dollars
  - \$139.2 million operating revenue in FY 2011
  - Net income \$27 million in FY2011, up 31%

# 20-Year Market Forecast Drives the Master/Vision Plan



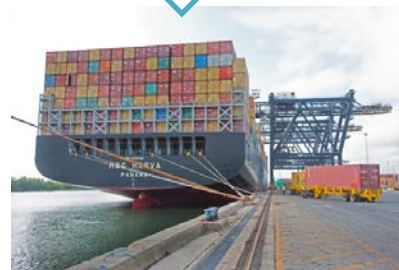
	Containers (TEUs)	Dry/Neo- Bulk (tons)	Petroleum (tons)	Cruise (passengers)
FY2010	793,227	581,427	15,483,856	3,674,226
FY2011	880,999	626,493	15,325,199	3,952,843
2029 Projected	2,401,230	7,625,627	16,699,008	5,161,118

# Bigger Ships Need Longer Berths + Deeper Water

Calling  
PEV  
Today

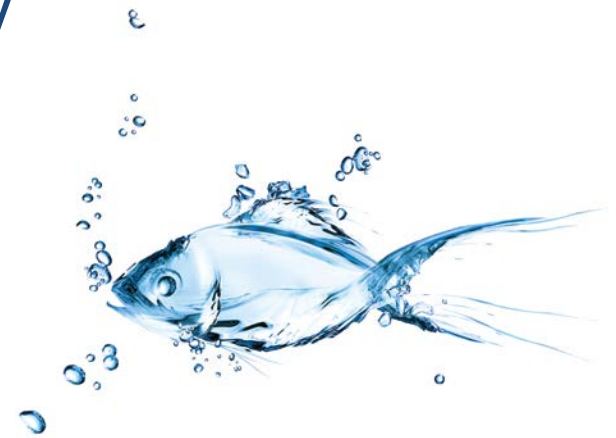
Calling PEV  
Today Lightly  
Loaded

Possible  
After  
Deepening



# Priority Capital Improvement Projects

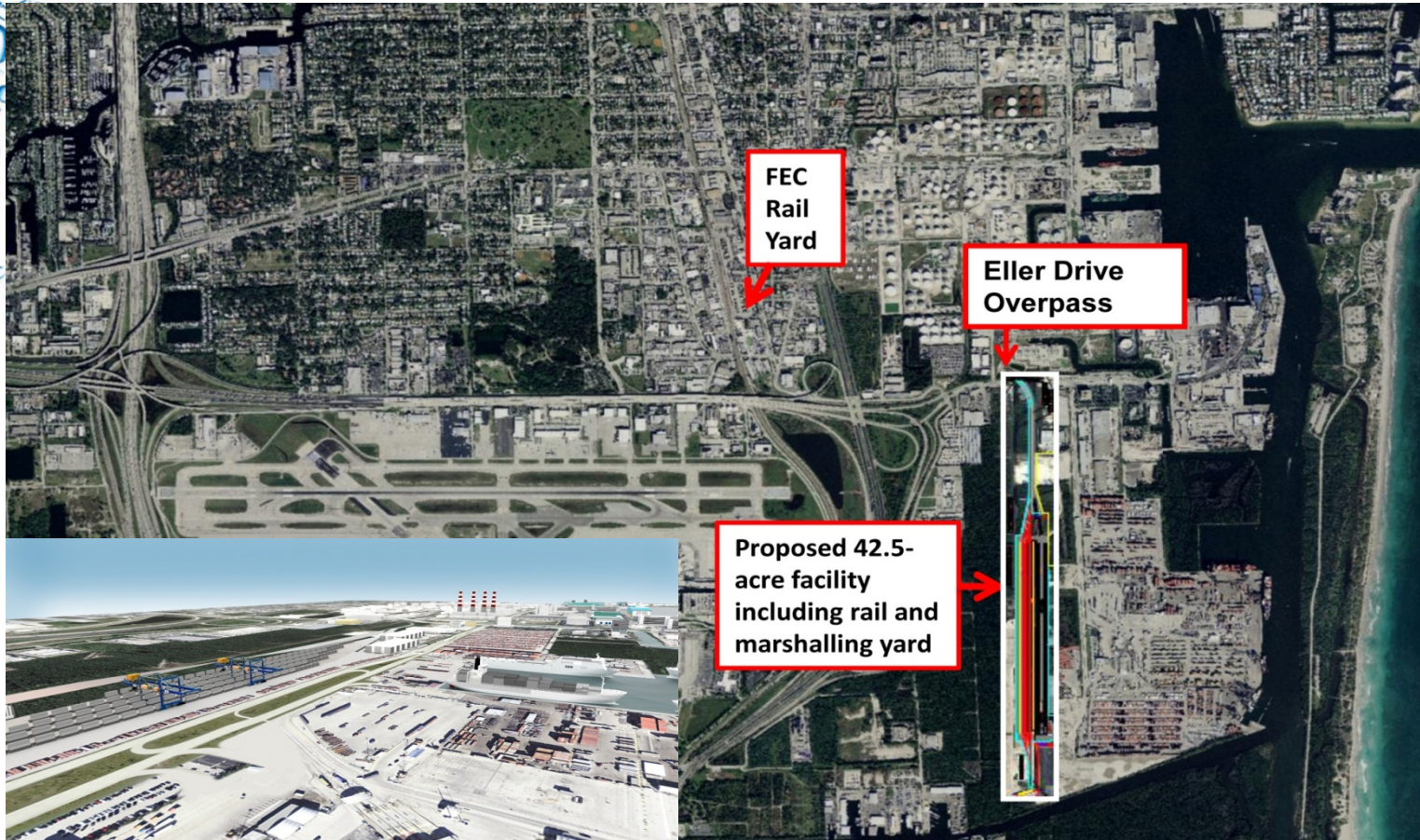
- Intermodal Container Transfer Facility (ICTF)
- Southport Turning Notch Extension with Upland Mangrove Enhancement Project
- Deepening and Widening the Port's Entrance Channel & Intracoastal Waterway





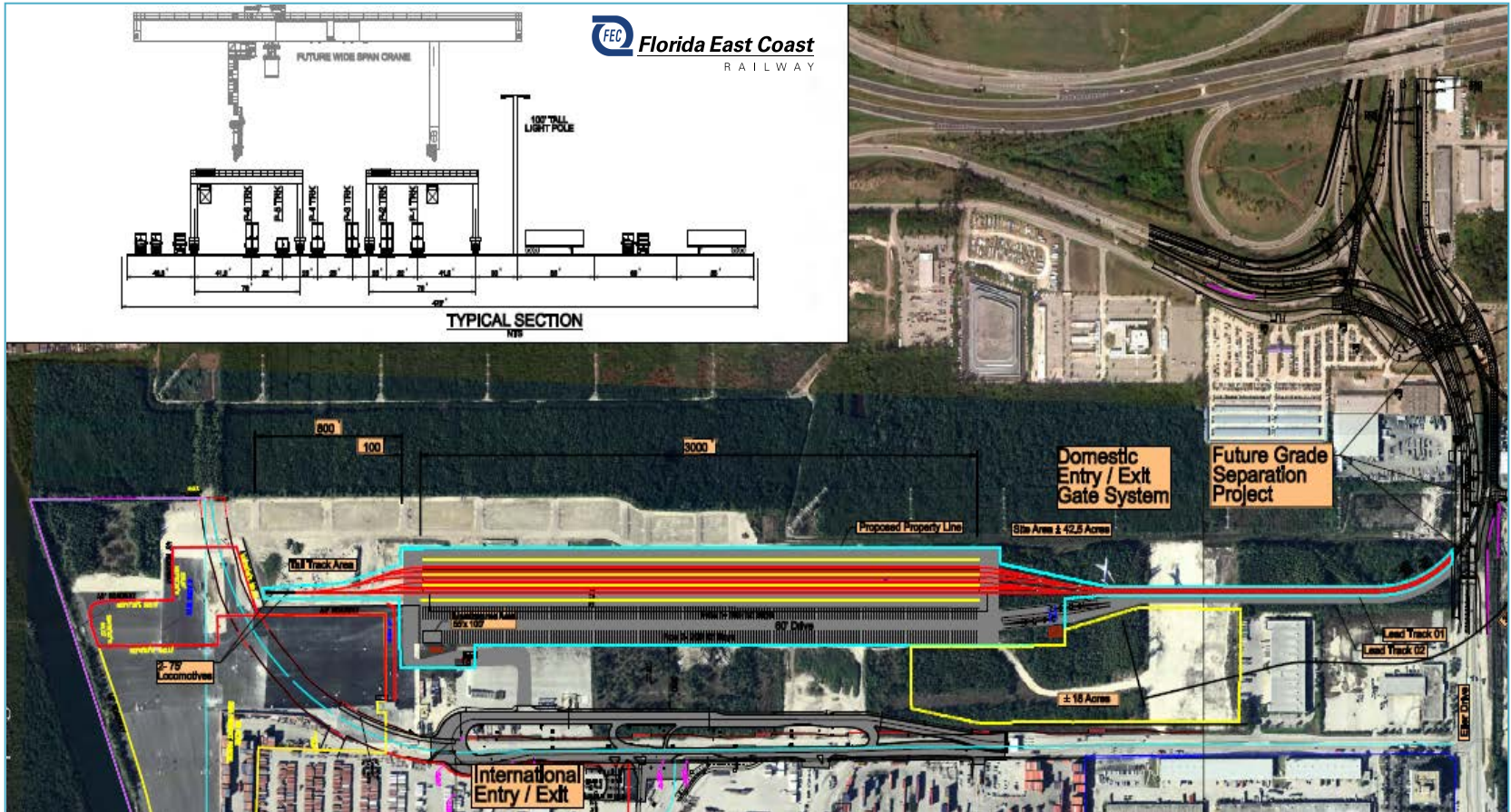
# Intermodal Container Transfer Facility

FEC to build and operate on-port freight rail





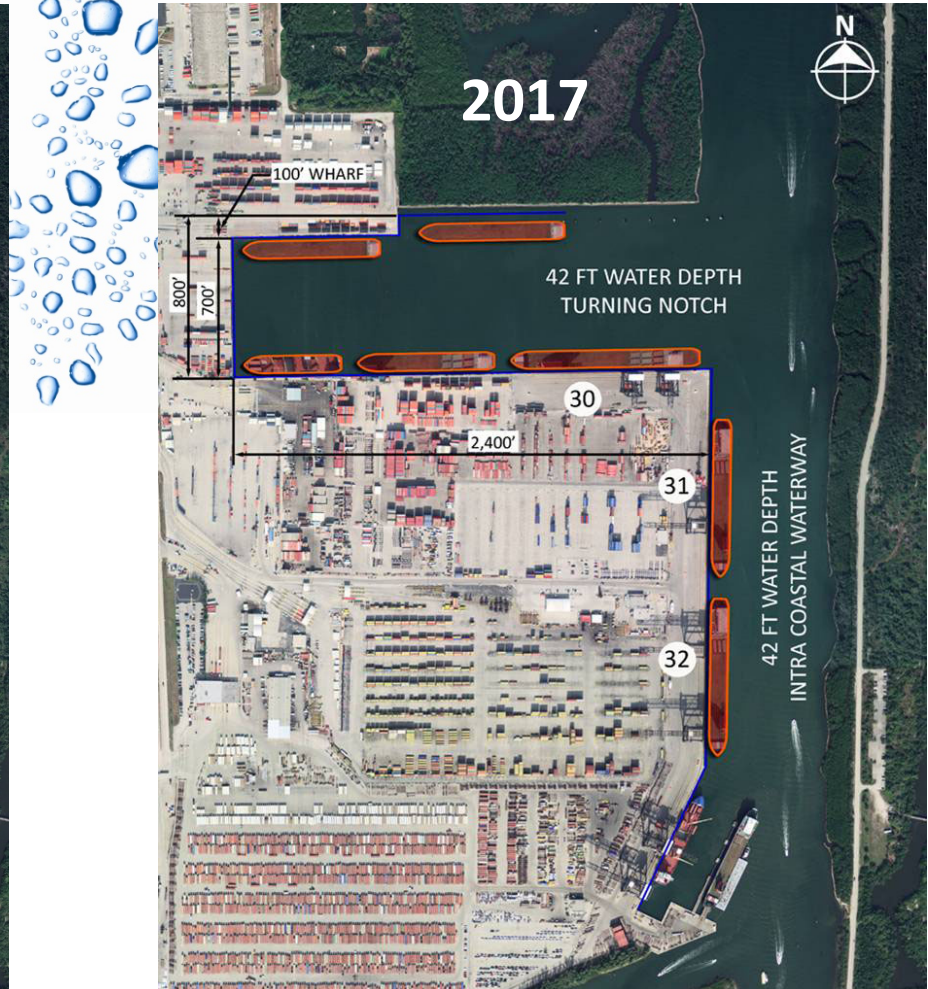
# FEC will be breaking ground on the Port Everglades ICTF in 2012





# Southport Turning Notch Extension

## Adding 5 new cargo berths





# Southport Turning Notch Mitigation



September 2010 Broward County and Florida Dept. of Environmental Protection signed agreement on Southport Mangrove creation-enhancement project

Agreement with FDEP speaks to expedited permitting, which is the critical component to maintaining the established schedule

8.68 acres is replaced with approximately 16.5 acres

Will result in fee-simple transfer of 60 acres to state

# Turning Notch Extension Status

- DeRose team working on surface drainage scoping; in discussion with Florida Dept. of Environmental Protection staff regarding permitting process
- Additional site environmental sampling beginning soon
- Selection of a contractor to grow mangrove plants and construct new wetlands area on County Commission
- \$13.3 million in State funding appropriated as of July 1. Additional \$13.7 million allocated in Florida Department of Transportation work program. Project eligible for another \$63.9 million in state funds.

# Deepening (50 ft) and Widening Channels

## US Army Corps of Engineers/Port Everglades project



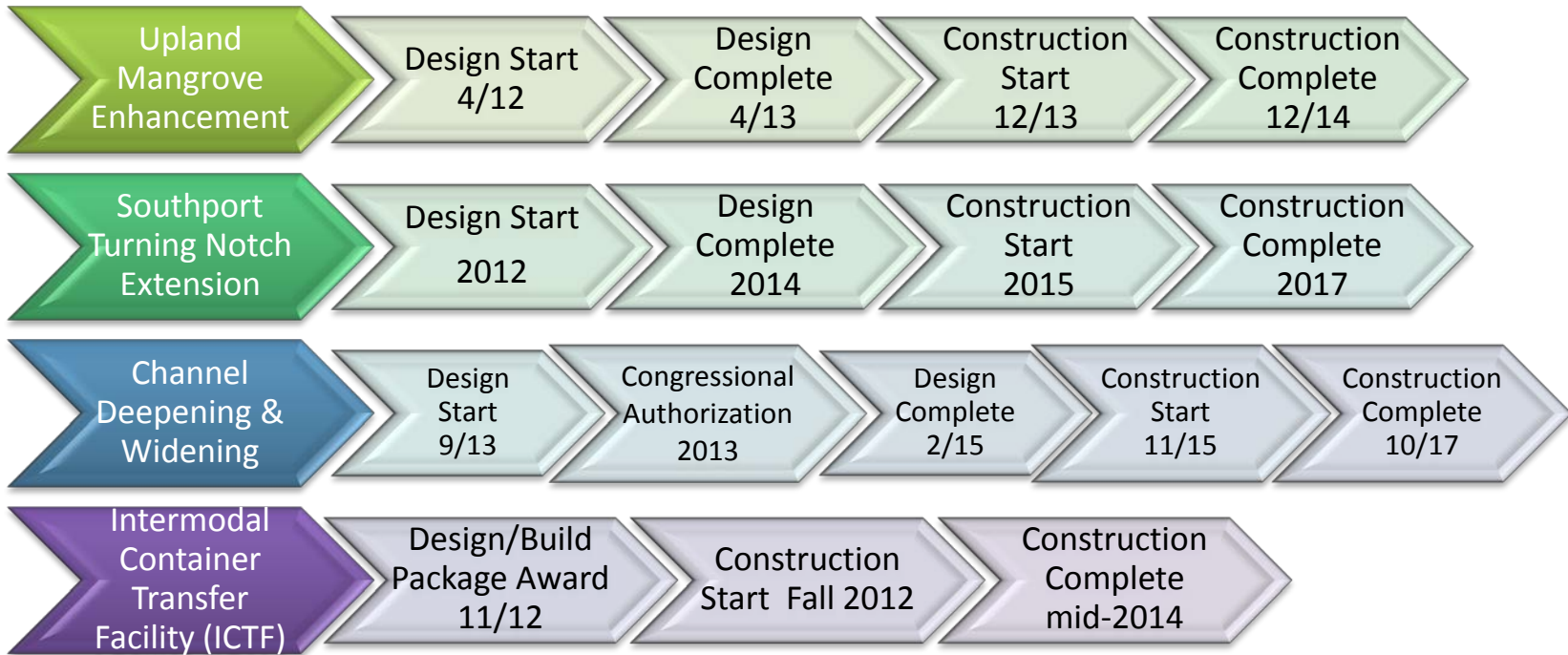


# FIND Dania Cut-off Canal Deepening and Port Maintenance Dredging

- Southport Dredge Spoil Dewatering Area complete
- Berths 31 and 32 maintenance dredging began June 2012
- Dania Cut-off Canal deepening to begin after berths complete
- Army Corps of Engineers (ACOE) to advertise for bids for channel maintenance dredging today, October 10
- Memorandums of Agreement with ACOE for Berths 19, 30 and South Turning Basin maintenance dredging and placement of beach quality material on John U Lloyd Beach State Park
- This work in in addition to the Corps conducting maintenance dredging throughout the entire Federal Channel



# Schedule for Priority Projects



# Costs & Funding for Priority Projects

## Turning Notch Extension and Upland Mangrove Enhancements

Total Project Cost	\$121.9 M
Cost to Port	\$30.5 M
Total eligible for State funding based on current 75% criteria	\$91.4 M
Currently programmed State funds	\$27.0 M
Remaining amount eligible for additional state funding	\$63.9 M

## Deepening and widening channel to 50 feet. Benefit/Cost Ratio 1.56/1

Total Project Cost	\$320.8M
State funding	(uncertain)
Federal share needed	\$189.2 M (uncertain)
Cost to Port (needed in FY14)	\$131.6 M
Potential Add'l Cost to Port	\$ 23 M

## Intermodal Container Transfer Facility (ICTF)\*



Total Project Cost	\$72 M
Port land value	\$19 M
Currently appropriated State grants	\$18 M
FEC equity	\$5 M
FEC State Infrastructure Bank (SIB) Loan (application pending)	\$30 M

* Eller Drive Overpass	\$42M
Overpass Separate project that is the first step towards ICTF. Broke ground July 2011.	State funded and contract awarded



To raise Florida's economy...

Port Everglades = JOBS



...you've gotta dig deeper.