

Rock Island District



- MVR Covers ~78,000 square miles
 - ▶ Minnesota, Wisconsin, Iowa, Illinois, & Missouri
- MVR has more than 900 people at its headquarters and 27 field operating sites
 - ▶ 12 UMR Locks & Dams
 - ▶ 8 IWW Locks and Dams
 - ▶ 3 Reservoirs

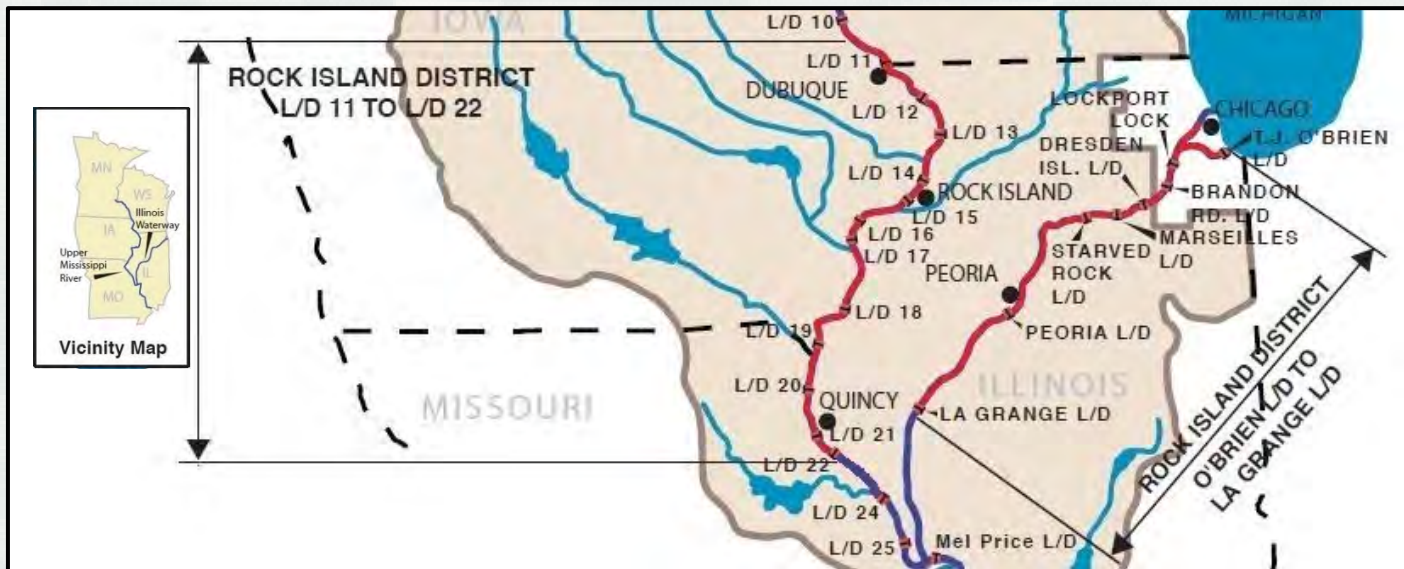


District Missions

- Navigation
- Flood Risk Management
- Regulatory
- Environmental Protection and Restoration
- Emergency Management
- Recreation
- Water Supply
- Hydropower
- Support for Others
- Military Programs



MVR Channel Maintenance



■ Mississippi River

- ▶ **314 River Miles**
- ▶ Below L/D 22 Saverton, MO
- ▶ Below L/D 10 Guttenberg, IA

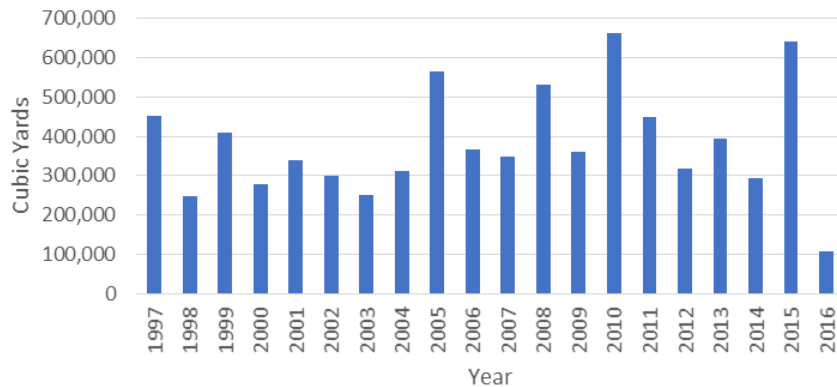
■ Illinois Waterway

- ▶ **268 River Miles**
- ▶ LaGrange L/D RM 80.2 – confluence of Des Plaines and Kankakee Rivers RM 273
- ▶ Des Plaines River to CS&SC
- ▶ CS&SC – S. Branch of the Chicago River RM 325.6
- ▶ Cal-Sag, Little Calumet, Calumet to T.J. O'brien L/D RM 326.4

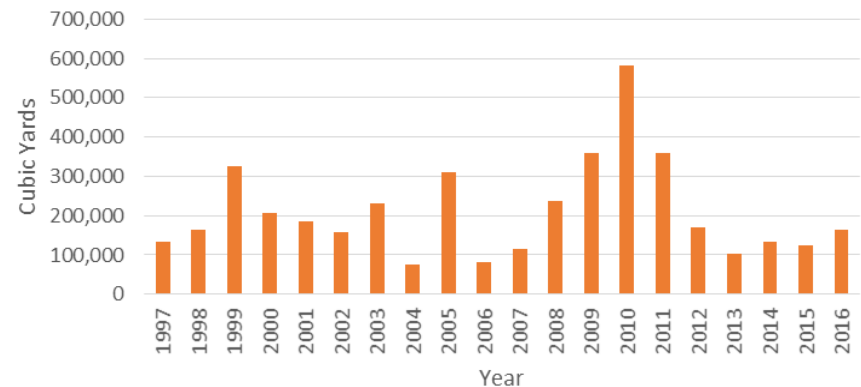


MVR Channel Maintenance Dredging

MVR 20-Year Summary of Cubic Yards Dredged
Mississippi River



MVR 20-Year Summary of Cubic Yards Dredged
Illinois Waterway



- Average 400,000 CY per year
- Average 200,000 CY per year



Dredging in MVR

Mechanical



Hydraulic



Mechanical



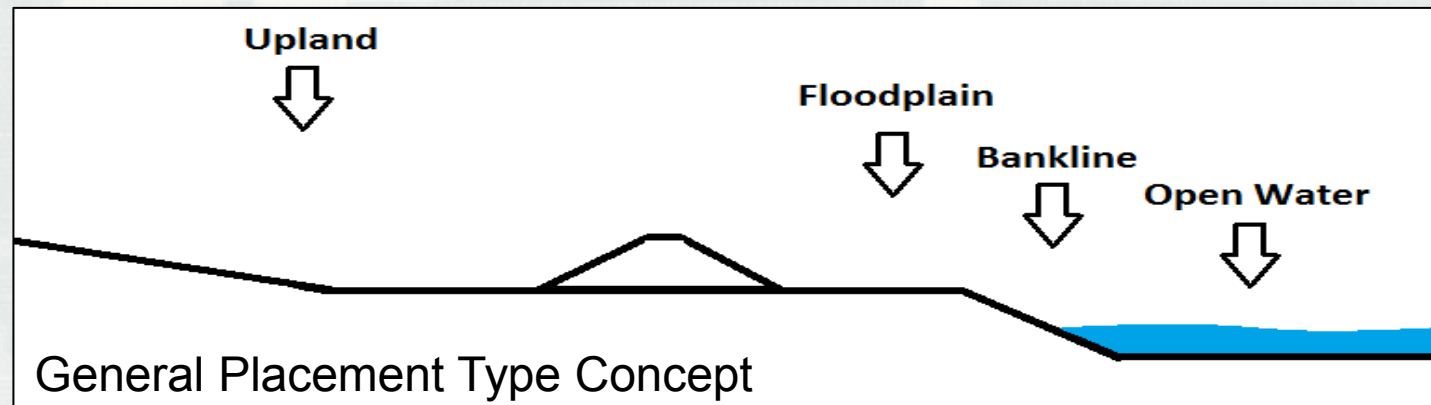
Hydraulic



BUILDING STRONG®

General Types of Placement

- Open Water
- Bankline
- Floodplain
- Upland



Hydrographic Survey



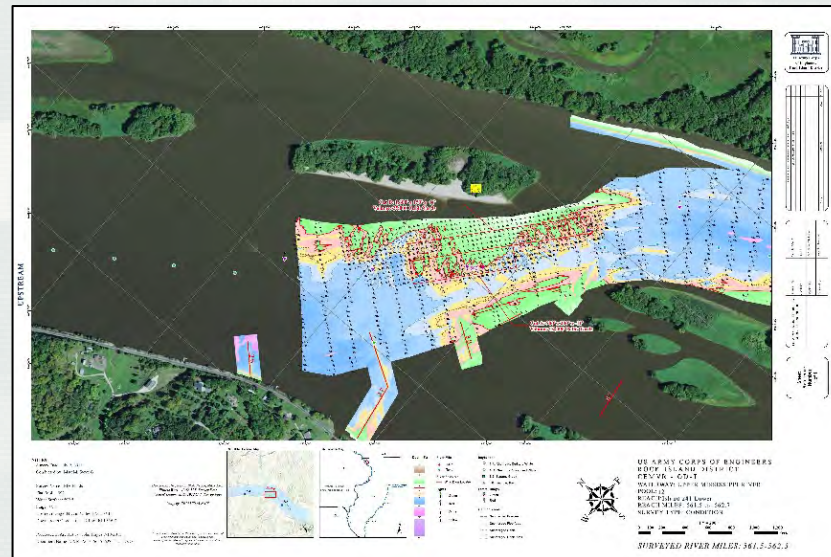
Hinds



Holling



Coot



BUILDING STRONG®

Dredge Schedules

ROCK ISLAND DISTRICT (MVR) - CORPS OF ENGINEERS										
2017 Dredging Schedule by Equipment - Upper Mississippi River										
6-Feb-17										
Pool	Site	River Mile	Dredging Dates Start End	Depth & Est. Quantity	Equip.	Placement Site	Placement Type	Dredging Notice #	Job Order #	Cat.#
Scheduled Dredging Jobs										
11	Finley's Landing	595		20,000		Willowbar	DMMP Site			
18	Keithsburg Lower	425		20,000		RM 395.1L, Kemp's Craigal Site 2	bankline, channel			
19	Kemp's Landing Lwr.	397		20,000		Upland DMMP Site, White Island	Upland, Bankline			
20	Lock #20 Upper	343		20,000		Upland DMMP Site	Upland			
22	Cave Hollow Light	305		20,000		Upland DMMP Site	Upland			
Total quantity by equipment:										
Government Hydraulic - GOETZ (GH) = 0 Government Mechanical - (GM) = 0 Contract Hydraulic - (CH) = 0 Contract Mechanical - (CM) = 0 Total Dredging = 0										
*E = Emergency I = Imminent Closure R = Routine Dredging										
Potential Jobs That Have Not Been Scheduled or Have Been Deferred										
11	Turkey River	605		12,000		Millonnes Row	Bankline			
13	Maquoketa River	547		10,000		Maquoketa River Site 2	Island			
13	Sabula Lower	532		25,000		Thalweg	Thalweg			
13	Dank Slough	531				Thalweg, Smith Bay	Thalweg, Bankline			
14	Beaver Island	516				Bankline RM 517L	Bankline			
14	Steamboat Slough	503				Princeton Beach	Bankline			
16	Lock #15 Lower	482		6,000		Centennial	Bankline			
16	Linwood	476		10,000		Buffalo, Centennial	Bankline			
16	Buffalo	472		16,000		Buffalo	Bankline			
16	Montpelier	469				Buffalo, Andalusia Island	Bankline			
17	Bass Island	447		30,000		Bass Island DMMP Site	Upland			
18	Keithsburg Upper	427		16,000		Campground, Willowbar	bankline, channel			
18	Benton Island	419		26,000		Benton Island, Benton Thalweg	Bankline, Thalweg			
18	Oquawka	415				Benton Thalweg	Thalweg			
18	Furnal Island	413		16,000		Benton Thalweg	Thalweg			
19	Burlington Bluff	401				Craigal Island RM 399.8L	Bankline			
20	Lock #19 Lower	361		3,000		RM 363.6R	Bankline			
21	LaGrange	336				LaGrange Beach	Bankline			
21	Hogback/Lone Tree	331		35,000		Hogback, Thalweg, hogback	Thalweg, Bankline			
22	NE Missouri Power	320		26,000		DMMP Site	DMMP Site			
Total quantity for jobs that have not been scheduled =				231,000						

ROCK ISLAND DISTRICT (MVR) - CORPS OF ENGINEERS										
2017 Dredging Schedule by Equipment - Illinois Waterway										
5-Jan-17										
Pool	Dredge Cut Name	River Mile	Dredging Dates Start End	Depth & Est. Quantity	Equip.	Placement Site	Placement Type	Dredging Notice #	Job Order #	Cat.#
LaGrange	Devil's Elbow	115.9			GM/CH	Bankline				
LaGrange	Quiver	121.7-121.9			GM/CH	Bankline				
LaGrange	Duck Island Lower	135.4			GM	Upland				
LaGrange	Parkin Wages	150.0-151.5			GM/CH	Bankline				
LaGrange	Lock Creek	155.6-156.5			GM/CH	Bankline				
Peoria	Handy	195.5		(2,000)	GM	Bankline				
Peoria	1/2 River to Lyons Lake	211.3-213.0			GM	Bankline				
Peoria	Lyons Lake to Clark Island	215.3-216.0			GM	Bankline				
Peoria	Huak Slough	218.0-220.5			CH	Bankline				
Peoria	Shaved Rock/Dedridge Island	232.0-232.5			GM	Upland				
* Currently operating at this job ** Dredging completed *** Dredging suspended Bankline placement requires O&T approval. Material Pool requires additional endorsement										
Total quantities by equipment:										
Government Hydraulic - (GH) = 0 Government Mechanical - (GM) = 20,968 Contract Hydraulic - (CH) = 0 Contract Mechanical - (CM) = 0 Hydraulic - (H) = 0 Total Dredging = 20,968										
Scheduled 20,968 Unscheduled 0 TOTAL 20,968										
*E = Emergency I = Imminent Closure R = Routine Dredging										
Potential Jobs That Have Not Been Scheduled or Have Been Deferred										
LaGrange	Above LaGrange Lock	80.0								
LaGrange	Briggs Landing	83.7								
LaGrange	Bar Island	84.5								
LaGrange	Grape Island	87.0								
LaGrange	Beardstown	87.5								
LaGrange	Sugar Island	84.0								
LaGrange	Browning Landing	97.0								
LaGrange	Elm Creek	102.4								
LaGrange	Holmes Landing	105.1								
LaGrange	Anderson Lake	109.0								
LaGrange	Grand Island	109.7								
LaGrange	Otter Creek	110.5								
LaGrange	Grand Island Head	112.4								
LaGrange	Malanzas Bay	114.0								
LaGrange	Devil's Elbow	115.2								
LaGrange	Historic Cut	117.5								
LaGrange	Quiver Island	122.0								
LaGrange	Big Sister Creek	125.5								
LaGrange	Scapple Island	132.0								
LaGrange	Duck Island	135.0								
LaGrange	Copperas Creek	136.0								
LaGrange	Copperas Creek	136.5								
LaGrange	Lancaster Landing	142.0								
LaGrange	Kingsdon Mines	145.0								



Upper Mississippi River Restoration

- Authorized by WRDA 1986
- The Corps is responsible management and execution
- Completed 54 habitat projects
 - ▶ ~100,000 acres of aquatic and floodplain habitat



Illinois River Basin Restoration



Peoria Lake – Peoria, IL



Contact Information

Matt Afflerbaugh
U.S. Army Corps of Engineers
Rock Island District
Operations Technical Support Branch
(309) 794-5384
matthew.j.afflerbaugh@usace.army.mil

