

US ARMY CORPS OF ENGINEERS

Baltimore District

FY19 Dredging Program

Project	Dredge Type	Quantity (1,000 CYs)	Placement	Estimated Award
Baltimore Harbor & Channels (Virginia - York Spit)	Mechanical	2,000	Open Water	Dec-18
Baltimore Harbor & Channels (MD approach)	Mechanical	2,000	Upland	Aug-19
Wicomico River, Maryland* (Lower River)	Hydraulic	100	Upland	Nov-19

**Small Business Set
Aside*

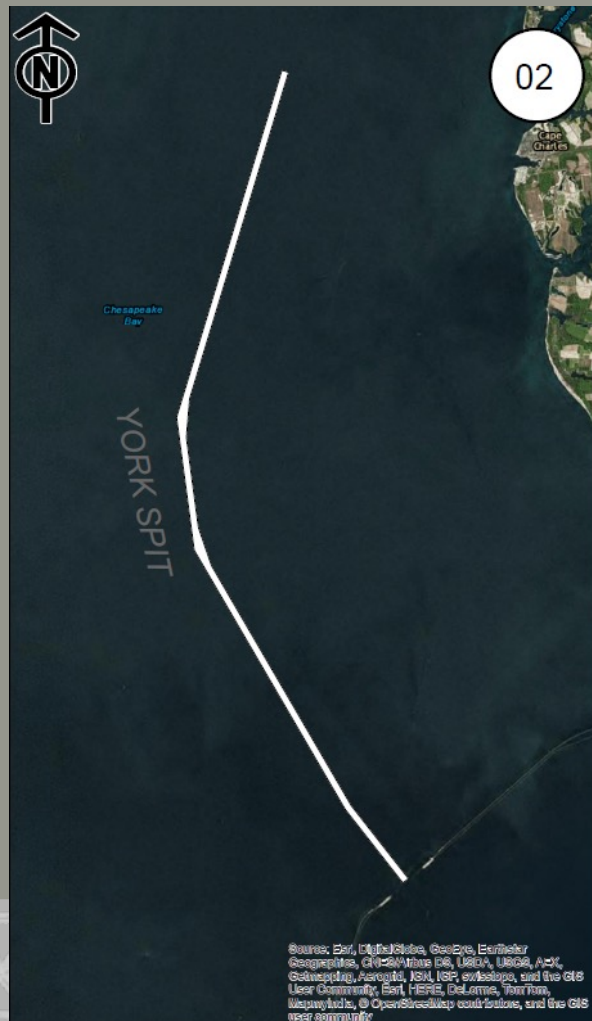


**US Army Corps
of Engineers**

Data as of 27 September 2018



BALTIMORE HARBOR – YORK SPIT CHANNEL, VIRGINIA



Source: Esri, DigitalGlobe, GeoEye, Earthstar
 Geographics, CNRS/Airbus DS, USDA, USGS, Aero
 Geographics, AeroGRID, IGN, IGP, swisstopo, and the GIS
 User Community, Esri, HERE, DeLorme, TomTom,
 Mapbox, © OpenStreetMap contributors, and the GIS
 user community.

Scope of Work	O&M Dredging
Quantity	2,000,000 CY
Material Type	Silt and Sand
Placement Area	Open Water
Equipment	Mechanical
Advertisement Date	August 2018
Award Date	November 2018
Start Date	April 2019
Issues	None



**US Army Corps
of Engineers**



BALTIMORE HARBOR MARYLAND APPROACH CHANNELS



Scope of Work	O&M Dredging
Quantity of Material	~2,000,000 CY
Material Type	Slits & Clays
Placement Area	Upland
Equipment	Mechanical
Advertisement Date	July 2019
Award Date	September 2019
Start Date	October 2019
Issues	Channel Section TBD



**US Army Corps
of Engineers**

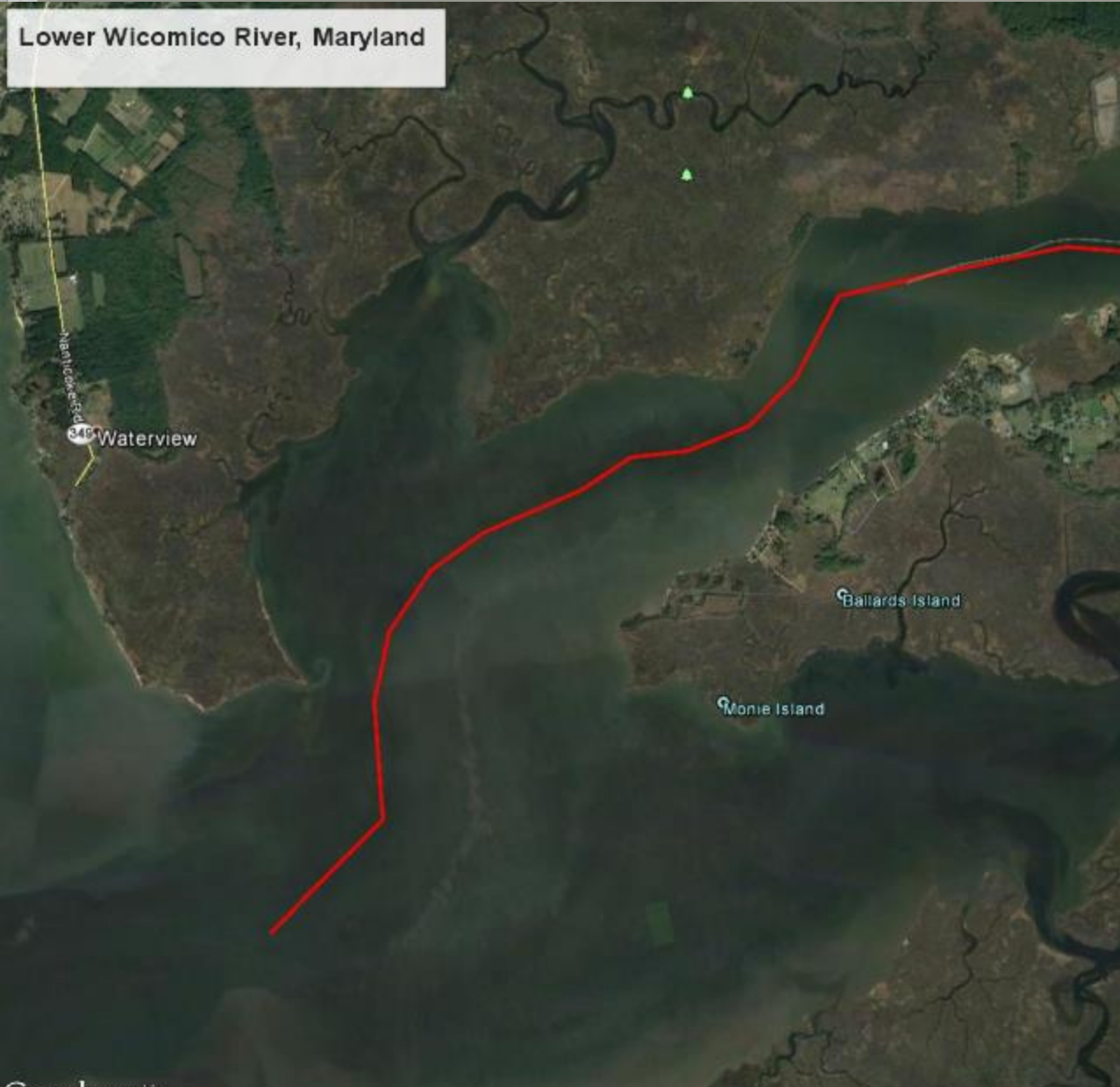


WICOMICO RIVER (LOWER REACH) MD

Lower Wicomico River, Maryland

Legend

- Whitehaven
- Ellis Bay Wildlife
- Feature 1
- Island
- Lower Wicomico
- Mt Vernon Volunteer Fire Co
- The Red Roost
- Whitehaven Hotel



Scope of Work	O&M Dredging
Quantity	100,000 CY
Material Type	Silt/Sand
Placement Area	TBD
Equipment	Pipeline
Environmental Window	15 Feb – 16 June
Advertisement Date	September 2019
Award	November 2019