

CELEBRATING 10 YEARS

*Advancing Safety Leadership in the Dredging
and Marine Construction Industry*



WEDA Eastern
Chapter Meeting

Michael Gerhardt, DCA



US Army Corps
of Engineers®

A True Partnership Since April 10, 2008



FOUNDING ORGANIZATIONS



**US Army Corps
of Engineers®**

Our Vision, Mission & Values

OUR VISION

Creating a 100% injury-free workplace for the dredging and marine construction industry.

OUR MISSION

Raise the industry standard on safety, in collaboration with our USACE partners, to protect our workers, resolve safety disputes, and build a safety-first culture.

OUR CORE VALUES

Teamwork, Trust & Transparency



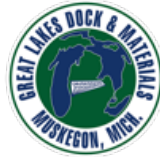
Join the CDMCS & Make a Difference!

Saving Lives...It's What We Do.

- Access to Subject Matter Experts & Peers
- Access to Federal Decision-Makers
- Access to Safety Program Resources
- It's the Right Thing to Do!



Our Membership



Our Partners



The American
Waterways Operators



GULFSAFE



NAVFAC
Naval Facilities Engineering Command



- U.S. Coast Guard
- OSHA
- NAVFAC
- Pipeline & Hazardous Material Safety Administration (U.S. Dep't. of Transportation)
- National Safety Council
- Gulf Safe
- Coastal and Marine Operators (CAMO)
- American Waterways Operators (AWO)

The “Good Catch” Series

The Good Catch Series is a collection of documents to help remind on-site employees that taking the right precautions helps prevent serious injury. The CDMCS provides various safety awareness resources to its members.

 COUNCIL FOR DREDGING & MARINE CONSTRUCTION SAFETY

GOOD CATCH SERIES

GOOD CATCH DESCRIPTION

The female end of an extension cord was cracked. There was also visible signs of heat damage.



IMMEDIATE ACTION TAKEN

The extension cord was taken out of service and discarded.



Involved Job Title: Deck Officers
Location: Terrapin Island
Alert Type: Property damage
Good Catch Date: 08/19/2016

Please review this Safety Alert with your crews and coworkers at your next crew meeting. Discuss similar work exposures and/or conditions at your job site and methods that can be used to prevent a similar incident from occurring.

The Council for Dredging and Marine Construction Safety © 2018

 COUNCIL FOR DREDGING & MARINE CONSTRUCTION SAFETY

GOOD CATCH SERIES

GOOD CATCH DESCRIPTION

A staff member informed the mate that we was going on the spill deck to inspect the drag head. Upon arriving on the spill deck he was stopped by the able bodied seaman (AB) from inspecting the drag head since they did not have on the appropriate PPE.

The employee was not wearing Metatarsal protection which is required to inspect or clean the drag head when debris is identified in the drag head.



IMMEDIATE ACTION TAKEN

The AB provided the appropriate Metatarsal protection and the employee put on the equipment on prior to inspecting the drag head.



Involved Job Title: Drag Head Inspection
Location: Dredge Padre Island
Alert Type: Injury
Good Catch Date: 01/27/2016

Please review this Safety Alert with your crews and coworkers at your next crew meeting. Discuss similar work exposures and/or conditions at your job site and methods that can be used to prevent a similar incident from occurring.

The Council for Dredging and Marine Construction Safety © 2018

Activities

SHORT-TERM

- Pipeline Task Force
- Back Safety / Ergonomics
- Safety Awards
- Annual Report

LONG-TERM

- EM 385-1-1 Rewrite
- Growth & Outreach
- Member Tools & Content
- Safety Statistics Reporting Program –
100% Member Participation



CDMCS Leadership in Safety Awards

On November 13, 2018 CDMCS members will begin recognizing safety leadership excellence in the dredging and marine construction industry by honoring one individual from the private sector, one individual from the public sector, and one company during the first annual CDMCS Safety Awards Dinner in Washington, DC.

An aerial photograph of a large-scale dredging project. In the center, a long, articulated cutter suction dredger (CSD) is positioned in a wide waterway. To its right, a large barge is being loaded with dredged material. Further right, another vessel with a crane is visible. The left side of the image shows a shoreline with a road, some industrial buildings, and a large circular structure, possibly a water treatment tank. The water is a deep blue, and the sky is a lighter blue. The overall scene depicts a major engineering project in a coastal or estuarine environment.

Dredging Near Underwater Pipelines

Situational Overview

- ✧ Army Corps issues permit to pipeline company to install underwater pipeline in seabed of port or waterway.
 - Section 10 of Rivers and Harbors Act of 1899 requires all permits for work in, over, or under navigable waters of the U.S., including pipeline installations, be issued by the Corps.
- ✧ Army Corps awards dredging project to contractor to dredge the port/waterway, **BUT**...
 - Location coordinates and ownership information of buried pipelines have been inaccurate in the permits, the plans & specs and in the water → creating serious safety hazards – injury, loss of life, environmental pollution and destruction of assets.
- ✧ Contractor assumes all liability and vulnerability.
 - Excavation Tech v. Columbia Gas of PA, 2009 – contractor cannot hold pipeline company responsible for economic damages (project delay and labor/material downtime) resulting from faulty markings or lack thereof.
 - Contractor turns to Army Corps for assistance.
- ✧ Army Corps issues contractor an “incomplete” or “unsatisfactory” for refusing to dredge over an active or inactive pipeline when coordinates & ownership information are inaccurate and does not assist contractor by requiring pipeline company to take safety measures.

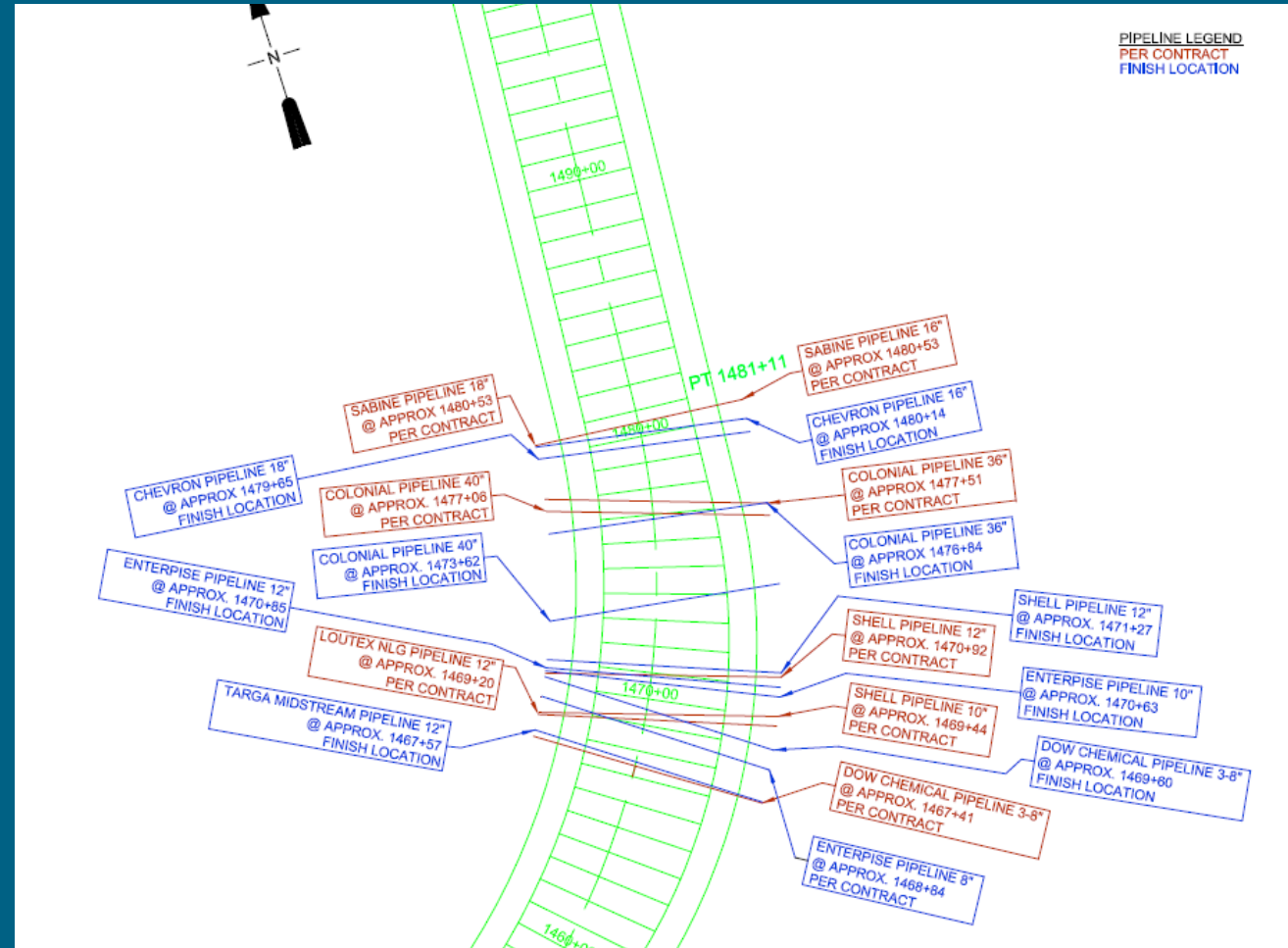
Examples of Incorrect Ownership Information

| | | | |
|--|---------|---------|--|
| ✓ 18" Oil P/L (Abandoned in Place) | 1480+53 | -48.0' | Sulphur, LA 70665 Mr. Danny Chapman <i>Cole Crews</i> (318) 882-6748 |
| ✓ 36" Oil P/L | 1477+51 | -54.0' | Sabine Pipeline Co. <i>Chertron</i> (Same as above) |
| ✓ 40" Gas P/L | 1477+06 | -54.0' | Colonial Pipeline Co. Mr. Huey Faulk <i>Randy Sullivan</i> 2053 Clifton Ridge Rd. Sulphur, LA 70665 (318) 882-1711 <i>337.802.9092</i> |
| ✓ 12" Gas P/L | 1470+92 | -60.0' | Colonial Pipeline Co. (Same as above) |
| ✓ 10" Propylene P/L | 1469+44 | -93.6' | Shell/Equilon Oil P/L Co. PO Box 551 Mont Belueu, TX 77580 Mr. Bob Higgins <i>Brian Kefler</i> (713) 241-7124 |
| ✓ 12" P/L | 1469+20 | -50.0' | Shell/Equilon <i>Enterprise</i> PO Box 651 Mont Belueu, TX 77580 Mr. Bob Higgins (713) 241-7124 |
| ✓ 3-8" Gas P/L | 1467+41 | -50.0' | Exxon NLG <i>Enterprise</i> PO Box 9 Gonzales, LA 70707-0009 Mr. Bob Raburn (225) 675-5387 |
| Aerial Crossing | 1450+10 | +174.5' | Dow Chemical Co. 5683 Carlyss Dr. Sulphur, LA 70663 Mr. Marty Landry 318-583-2710 |
| ✓ 6" Gas P/L <i>Abandoned</i> | 1412+55 | -50.0' | Gulf State Utilities Co. P.O. Box 2893 Lake Charles, LA 70602 Mr. Williams Bates 318-436-4351 |
| ✓ 2-20" Gas P/L | 1408+95 | -55.0' | Texasco Pipeline Co. <i>Chertron</i> 2159 Clifton Ridge Rd. Sulphur, LA 70665 Mr. Danny Chapman <i>Cole Crews</i> (318) 882-6748 <i>337.277.3632</i> |
| ✓ 22" Oil P/L | 1401+73 | -54.0' | Gulf South Pipeline 1415 Miller Ave. West Lake, LA 70669 Jules Mayeux 337-988-7105 |
| | | | Shell Pipeline Co. |

SECTION 35 20 23.00 12 Page 12

ED 10-016

Examples of Incorrect Pipeline Coordinates



Industry Recommendations for USACE

- ✧ Ensure all pipelines are properly identified in the water, permit, and contract plans & specs prior to dredging by...
 - ✧ Developing a National Underwater Pipeline Database (now called PLOVER)
 - ✧ Accurate as-built data on all future installations
 - ✧ Accurate as-built data on all current installations, verified by comprehensive USACE and/or contractor surveys
 - ✧ “Toe” data, in addition to centerline data
 - ✧ Empowering Project Managers & Coordinating an Effective Internal Process
 - ✧ Navigation project managers, regulatory personnel, plans & specs personnel, and contract mgmt. personnel confirm the coordinates of all pipelines in the project and inform contractors.
 - ✧ Project managers may obtain pipeline data by separate contract or line item in a contract should there be doubt in the data available.
 - ✧ Before issuing a new permit, regulatory personnel and the navigation project manager coordinate to ensure proper depths and documentation are established.
 - ✧ Including Pipeline Owners in Pre-construction Meetings
 - ✧ Requiring (in the permit) Pipeline Representation be Aboard the Dredge or Onsite (shut line down in an emergency)
 - ✧ Indemnifying Contractors...if mismarked or unmarked pipelines are struck

An aerial photograph of an industrial facility, likely a refinery or chemical plant, situated along a large body of water. Several barges and cranes are visible in the water, and various industrial structures and storage tanks are on the land. The image is overlaid with a semi-transparent blue filter.

**Let's Eliminate This Risk
Together**



**FOR MORE INFORMATION
OR ANY QUESTIONS,
PLEASE CONTACT:**

INDUSTRY CO-CHAIR

Devon Carlock
VP of Safety & Government Relations
Cottrell Contracting Corporation
Office: (757) 547-9611
devon@cdmcs.org

PIPELINE TASK FORCE DIRECTOR

Michael Gerhardt
Vice President
Dredging Contractors of America
Direct: (202) 320-3004
michael@cdmcs.org