

NEW LOCK AT THE SOO: PROJECT UPDATE

WEDA MIDWEST CHAPTER MEETING

Rachel Miller, PE

Supervisory Civil Engineer

Contracting Officer's Representative (COR)

24 March 2022

"The views, opinions and findings contained in this report are those of the authors(s) and should not be construed as an official Department of the Army position, policy or decision, unless so designated by other official documentation."



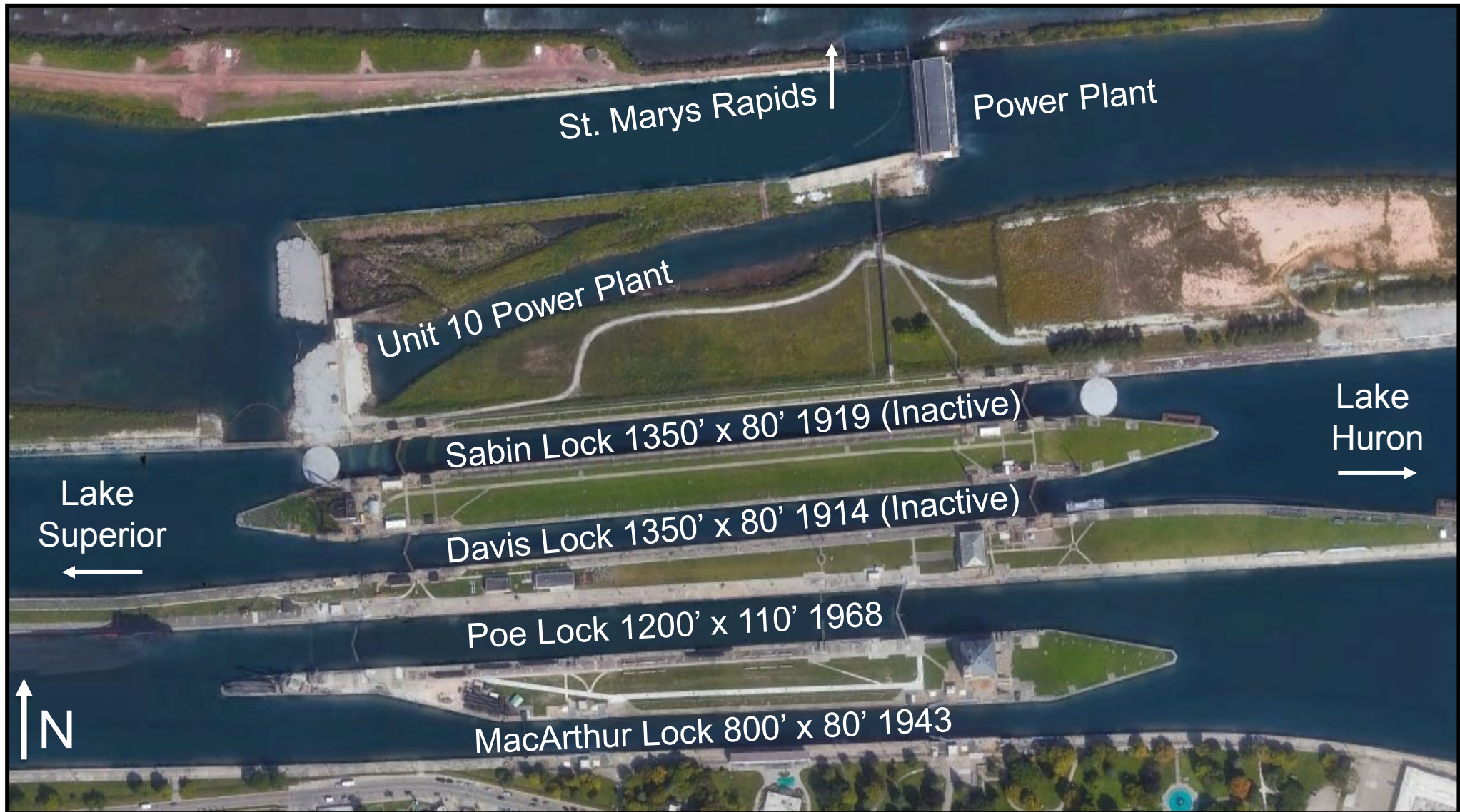
**US Army Corps
of Engineers®**





SOO LOCKS FACILITY

2



IMPORTANCE OF THE SOO LOCKS



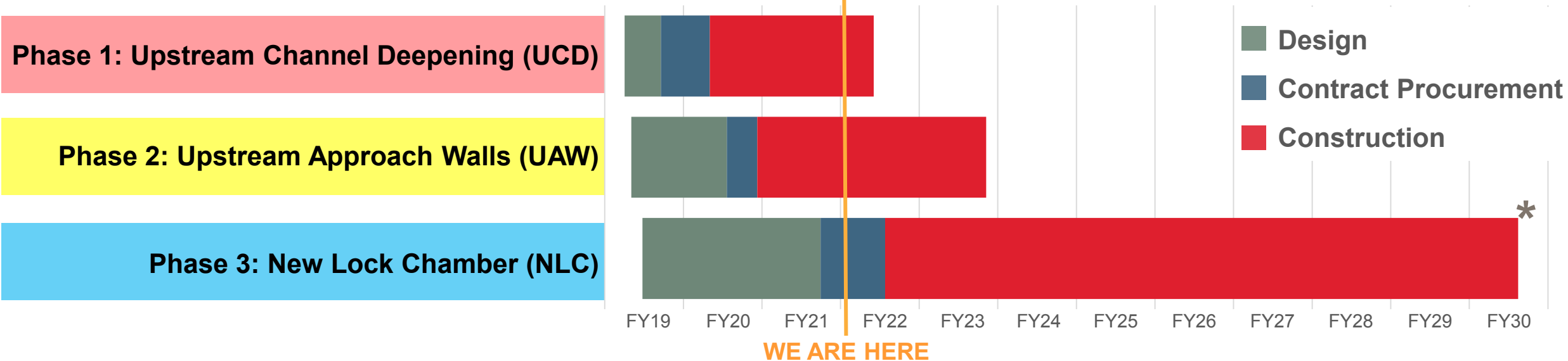
- Nearly ALL domestically produced high strength steel used to manufacture products like automobiles and appliances is made with iron ore that transits the Soo Locks.
- Of the iron ore that transits the Soo Locks 89% of it is restricted to the Poe lock due to vessel size.





NEW LOCK AT THE SOO - STATUS

4



* Early completion could be realized with efficient funding, and favorable weather conditions

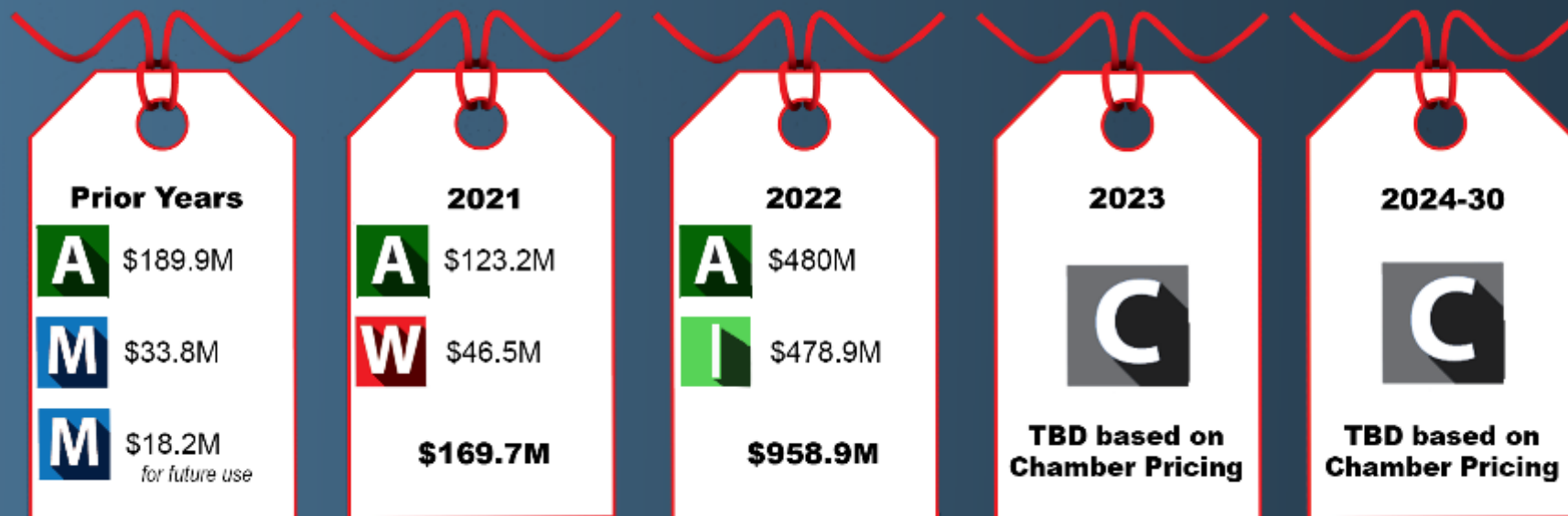




NEW LOCK AT THE SOO - CAPABILITIES & ALLOCATIONS



- A** Federal Appropriation
- W** USACE Work Plan
- I** Infrastructure Investment and Jobs Act
- M** State of Michigan
- C** Capability



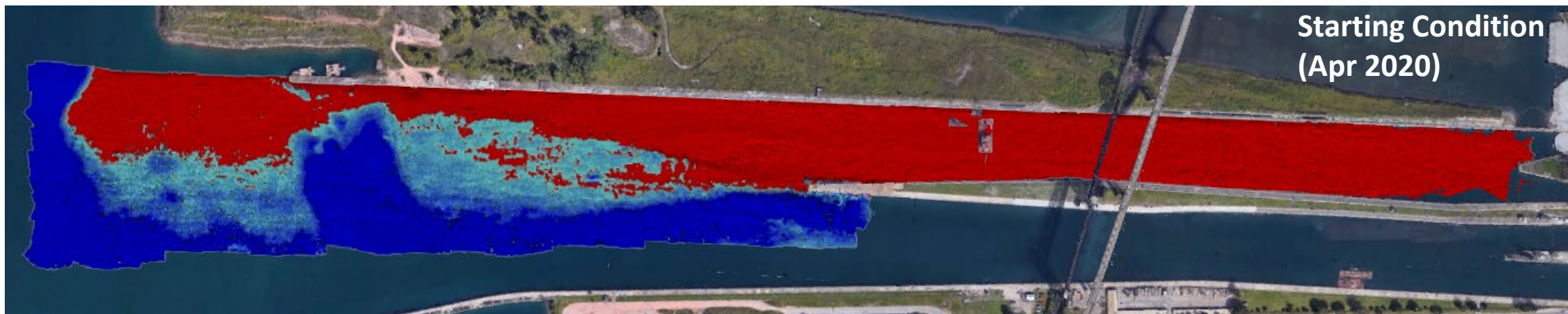
Total recieved to date: \$1.371B

*\$478.9M Funded in Infrastructure Investment and Jobs Act (IIJA) & \$480M funded in FY22 President's Budget

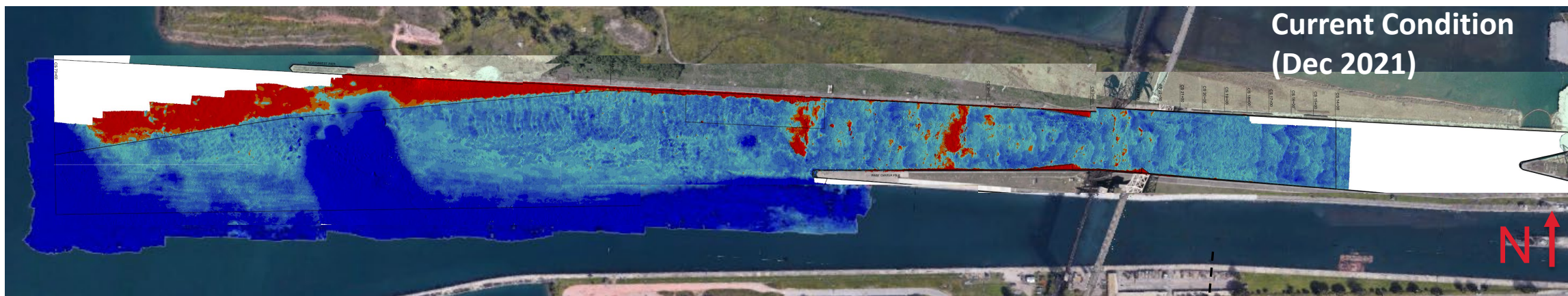
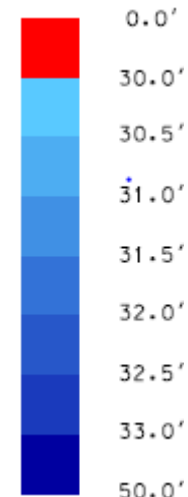


PHASE 1: UPSTREAM CHANNEL DEEPENING

6



DEPTH BELOW
LOW WATER
DATUM



Scope: Remove 300,000 CY of bedrock and overburden to deepen the Approach Channel to depth of 30 feet

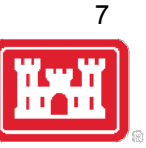
Construction Status:

- \$52.6M Contract awarded in January 2020 to Trade West Construction Co. of Nevada.
- Contractor has completed roughly 95% of the required contract work.

Estimated Completion: Summer 2022



PHASE 1: UPSTREAM CHANNEL DEEPENING OPERATIONS



Xcentric Ripper



PC1250 with 6.5 CY Bucket



PHASE 1: UPSTREAM CHANNEL DEEPENING OPERATIONS

8



Bedrock from Upstream Approach Channel

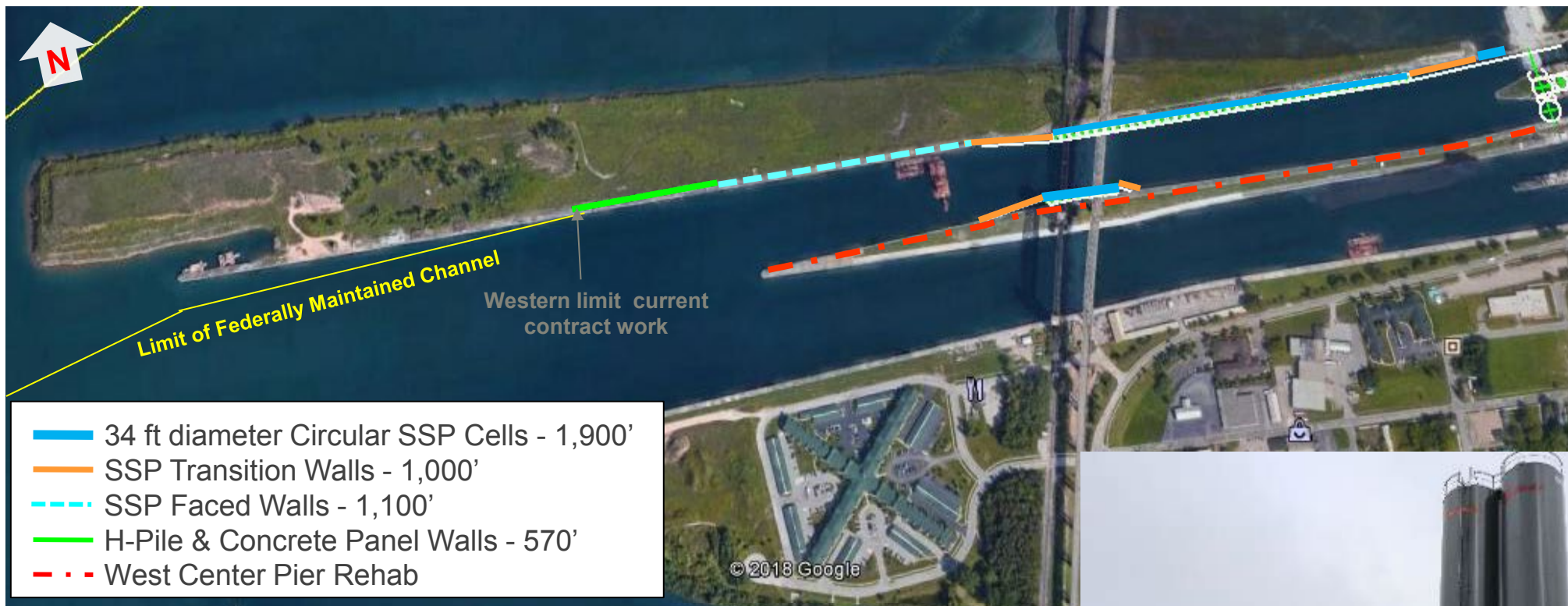


Overburden from Upstream Approach Channel



PHASE 2: UPSTREAM APPROACH WALLS

9



Scope: Rehabilitate approach walls upstream of New Lock including reconstruction of walls, concrete caps, mooring bollards, electrical, and lighting.

Project Status:

- \$111.3M Contract awarded to Kokosing Alberici in September 2020
- Contractor arrived on site in April 2021
- Contractor has left the site for the winter and will return when the ice clears in the spring.

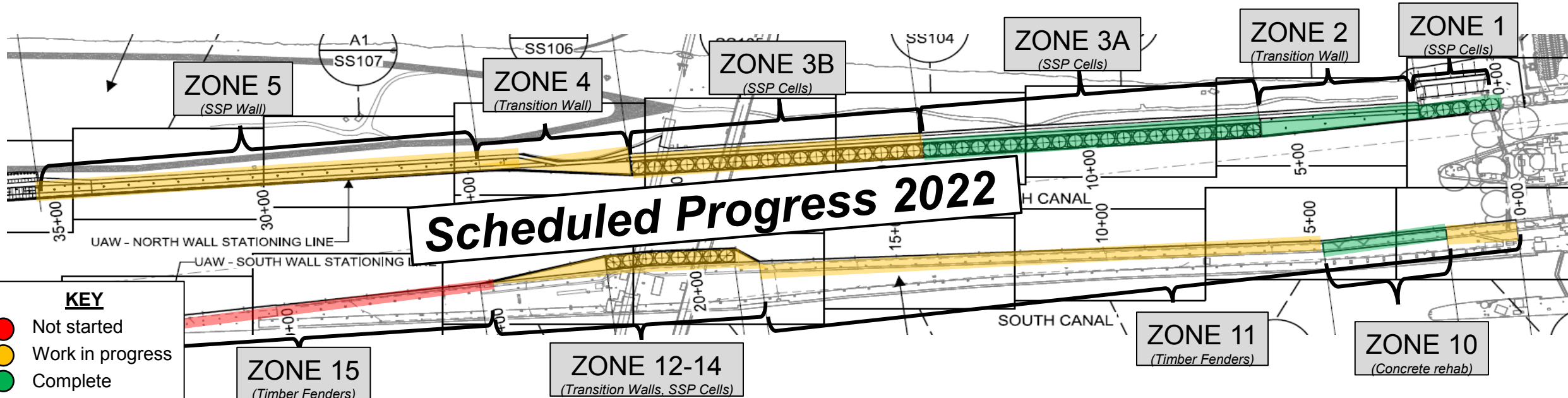
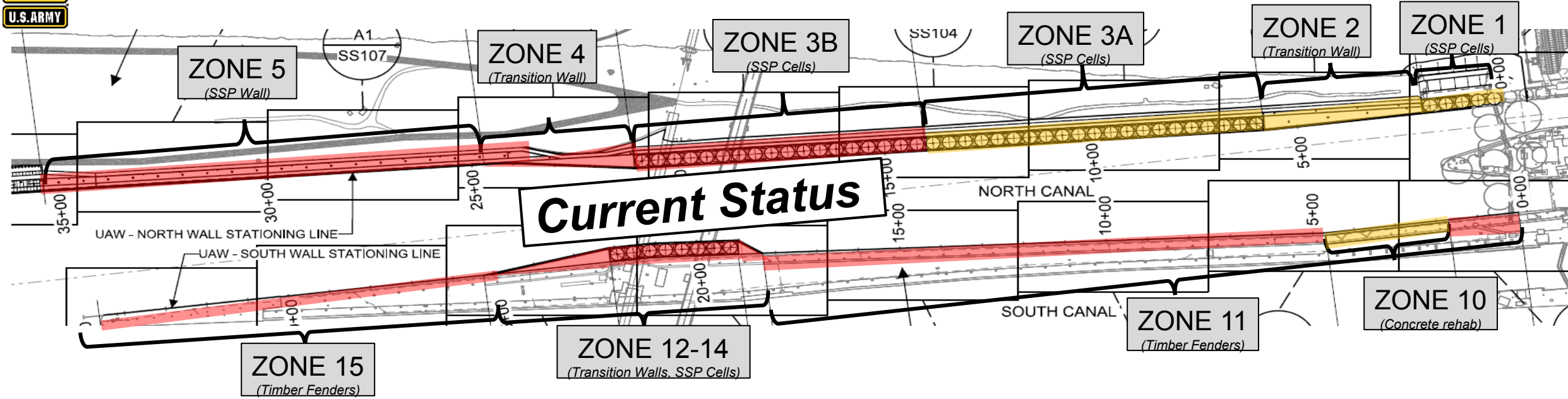
Estimated Contract Completion: Fall 2023





U.S. ARMY

UPSTREAM APPROACH WALLS - 2022 LOOKAHEAD



KEY

- Not started
- Work in progress
- Complete

PHASE 2: CELL CONSTRUCTION



Template to be used to construct circular steel sheet pile cells



1st sheet pile, sheet piles are 30' strips of steel placed within the coffer cell template

PHASE 2: CONCRETE PLACEMENT



First tremie concrete placement



First concrete placement in cell

PHASE 2: CONCRETE CAP PLACEMENT



Cell SL2 Concrete Cap

PHASE 2: NORTH STEEL SHEET PILE CELLS



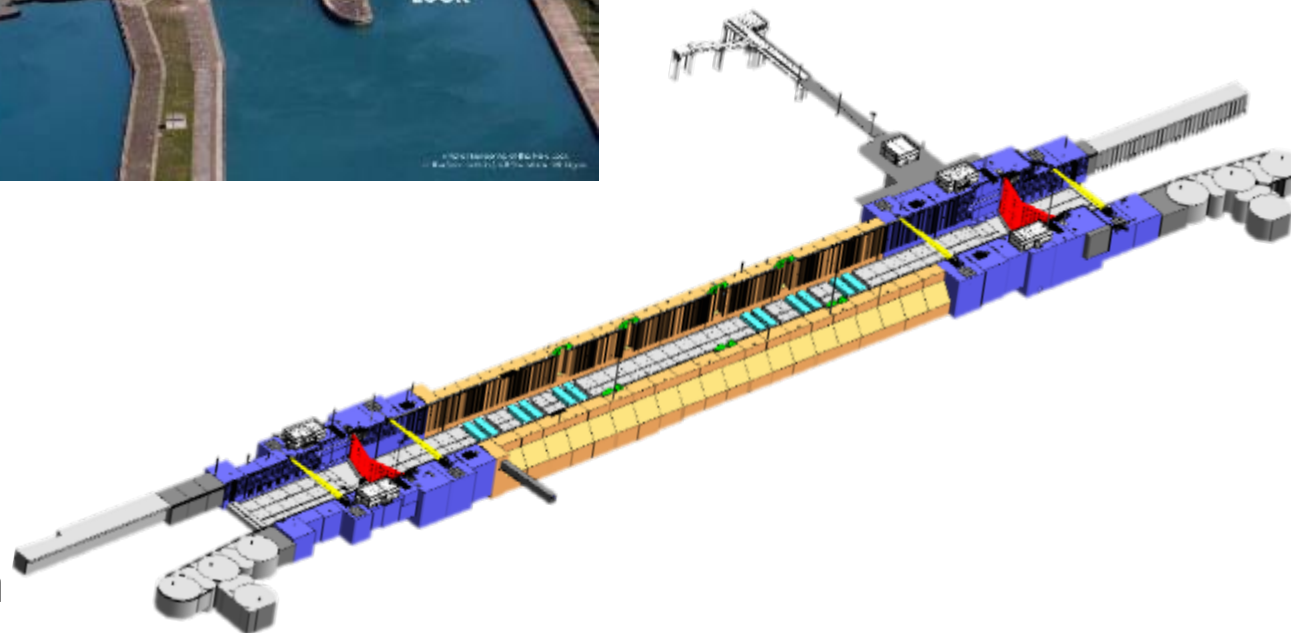
UAW Cells N1 – N19

PHASE 3: NEW LOCK CHAMBER UPDATE



- Constructing new “Poe sized” Lock in footprint of existing Sabin Lock
- Proposals received Nov 2021, review of proposals in progress, contract award scheduled for late spring 2022
- Construction completion by Fall 2030
- Key Features:

- Wide Wall Monoliths
- Chamber Monoliths
- Miter Gates
- Ship Arrestors
- Filling & Emptying System
- Hands Free Mooring



PROJECT'S ECONOMIC IMPACT

- **1,240** jobs created on an annual basis
 - 600 direct jobs
 - 210 indirect jobs
 - 430 induced jobs
- **1,400,000** tons of limestone or granite
- **112,000** tons of American-made cement
- **25,000** tons of American-made steel



Upstream Approach Wall Tremie Concrete Placement

QUESTIONS



Contact Info:

Email: LRE-New_SOO_Lock@usace.army.mil

Website: <https://www.lre.usace.army.mil/>