



Florida Inland Navigation District

Mark Crosley – Executive Director - **FIND**

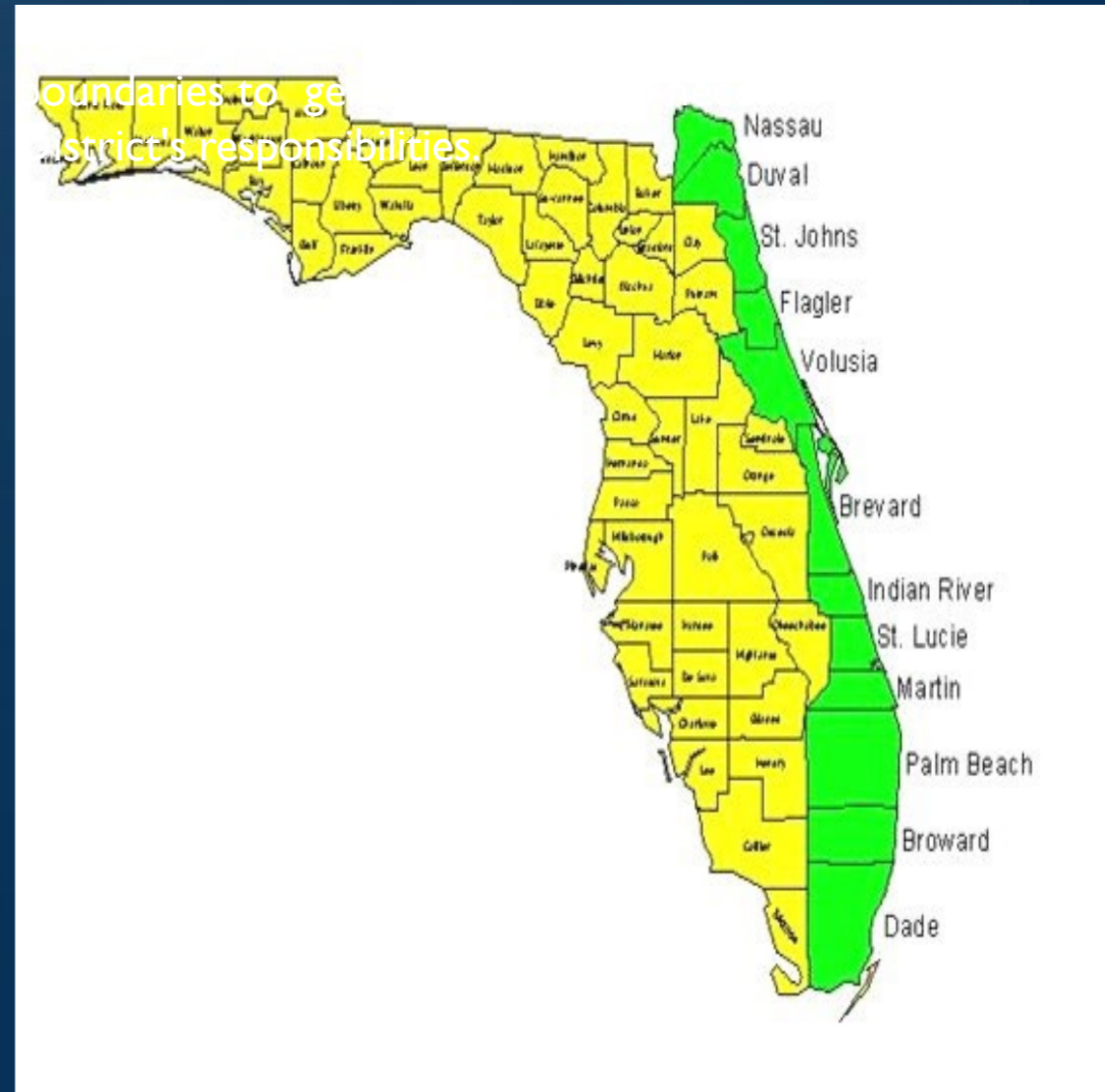


FIND's Mission

Function as the "local sponsor" of the Atlantic Intracoastal Waterway project in Florida, a State/Federal navigation project

FIND levies a tax on all real property with the 12 member counties to generate funding to fulfill the management and maintenance responsibilities (along with the USACE) of the waterway.

Governed by an appointed Board of Commissioners.



 Find Member Counties



FIND Commissioners



J. Carl Blow
St. Johns County



Michael O'Steen
Duval County



Frank Gernert -
- Vice-Chair
Broward County



Donald Cuozzo
Martin County



T. Spencer Crowley, III
- Chair
Miami-Dade County



VACANT
St. Lucie County



Randy Stapleford
Flagler County



Charles C. Isiminger
Palm Beach County



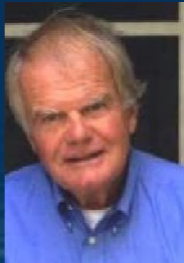
Jerry H. Sansom
Brevard County



Buddy Davenport
- Secretary
Volusia County



Steve Boehning
- Treasurer
Indian River County



Lynn Williams
Nassau County



Quick Facts about the Intracoastal Waterway

Atlantic ICW is also known as Marine Highway M-95

Florida AIWW & IWW (sometimes collectively referred to as the ICW):

- Total within FL approx. 450 miles in length, (374 miles within FIND), from Georgia border to Crossbank in the Florida Keys.

Project Design Depth of the 125-foot-wide project is:

- -12 feet from the state border to Fort Pierce,
- -10 feet from Fort Pierce to Miami,
- -7 feet from Miami to Crossbank in the Florida Keys

Approximately 500,000 cubic yards avg. dredged each year

With an estimated annual cost of \$16-\$20 million to maintain at optimum functionality.



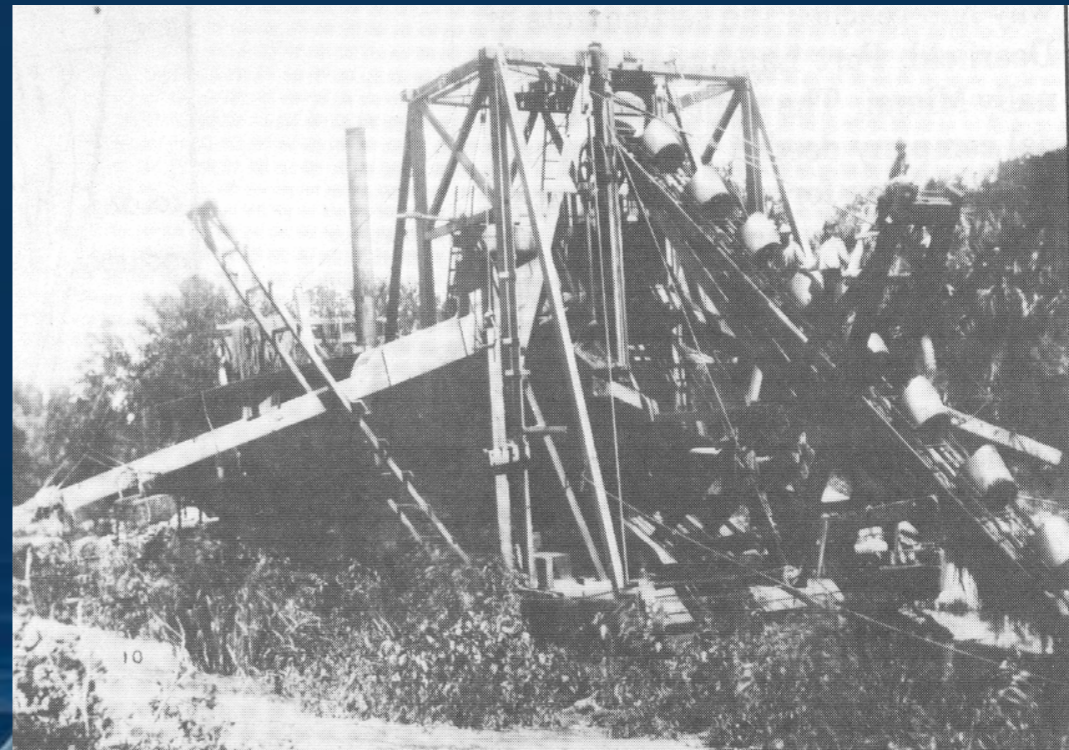
OWW - Total approx. 154 miles (with approximately 60 miles within FIND)

- Project design depth is -8 feet at 80 wide. There are 5 operational locks, 2 within **FIND**.



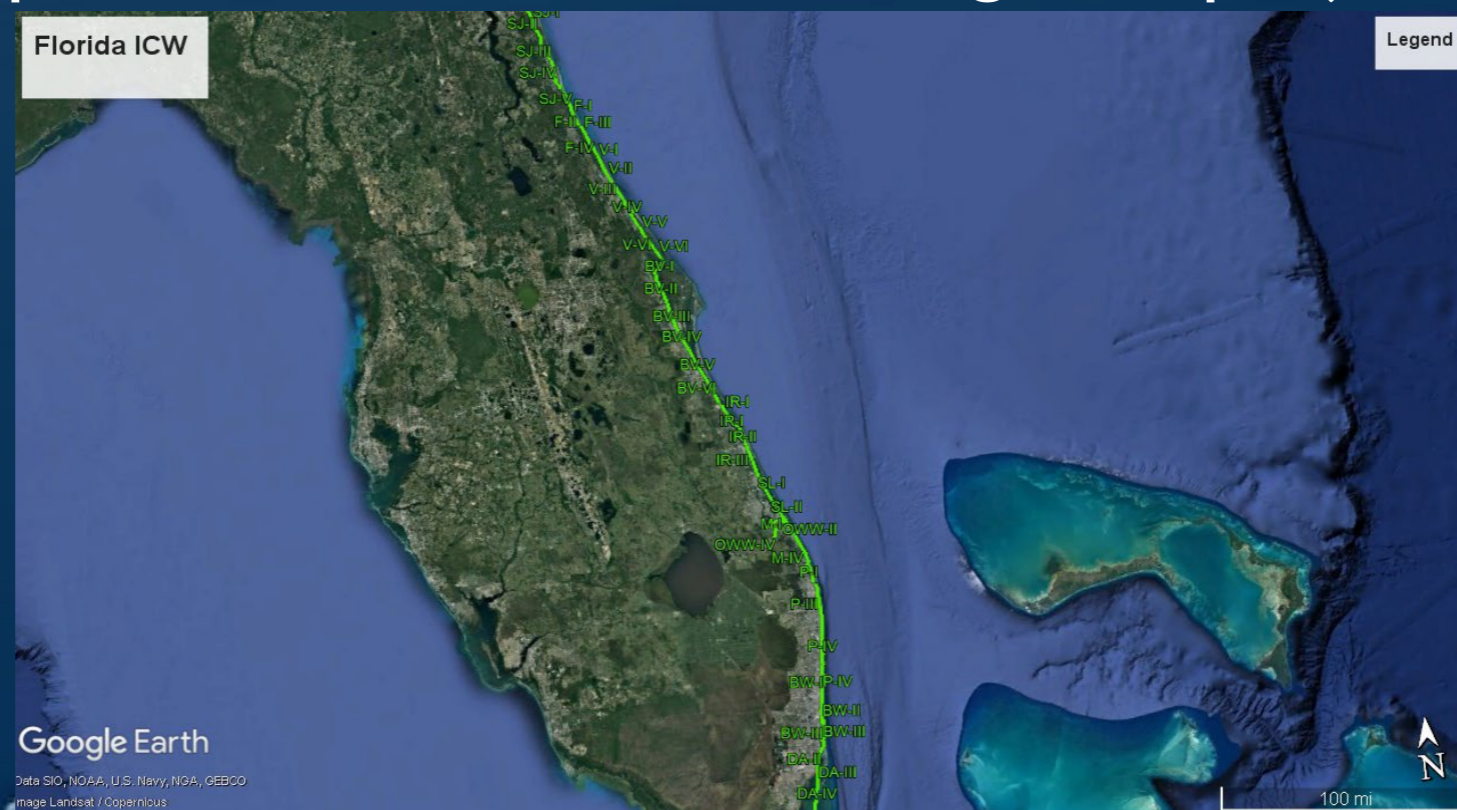
Brief History of the Waterway

- Initiated by private canal companies as early as the 1820's.
- 1848 a Quartermaster General Report emphasized establishing an east coast inland route from St. Augustine to Key Biscayne.
- 1880's The Florida Coastline Canal company began successfully connecting natural waterway with man-made canals.
- In 1912, opened as a toll canal from Jacksonville to Miami, with booms and chains.
- By 1920's canal conditions deteriorated and the need for an inland waterway from New England to Key West was recognized by the Chief of Engineering of the USACE and the Secretary of War.



Establishment of the Florida Inland Navigation District

- \$1,887,000 bond was authorized to purchase the existing canal, rights of way and spoil areas from the private interests.
- The Florida Legislature created **FIND** in 1927 as the “local sponsor” for the federal navigation project.



FIND Today

Responsible for obtaining rights of way and land for the storage and management of dredged materials.

To meet this core mission, **FIND** created a comprehensive 50-year Dredged Material Management Plan for the waterway, including the portion of the Okeechobee Waterway in Martin and Palm Beach counties.



Other roles and responsibilities include:

- assist the Corps with waterway maintenance and development
- provide grants for public waterway access and waterway cleanup programs
- collection and publication of waterway information including economic studies, and waterway mapping.



Dredged Material Management Areas (DMMA's)

FIND has 67 DMMA's within the 12-county District, of which 24 have been constructed and are operational.



FIND Assistance Programs



Waterway Assistance Program (WAP)

- financially cooperating with local governments

Cooperative Assistance Programs (CAP)

- financially cooperating with federal and state government agencies
 - 50/50% funding assistance for waterway access projects.
 - Approximately \$13-\$15 million dollars available annually



Derelict Vessel Removal Grants



Derelict vessels in our waterways can cause navigation safety and environmental problems.

The District provides assistance funding up to \$75,000 per county per year to assist other governments with derelict vessel removal projects.



Spoil Island Restoration and Enhancement Grants

Many spoil islands were created by the USACE from dredged material.

Grant offers \$7,500 per project, requires 10% match

One of the best examples of a multi-use spoil island in the District is Peanut Island in Palm Beach County.

Wildlife habitat and recreational uses surround the dredged material management areas.



Waterway Clean-Up Program

Up to \$10,000 per county

FIND sponsors voluntary waterway clean-ups in each of the 12 counties, partnering with Keep Florida Beautiful affiliates, Marine Industry Associations and other organizations.





ECONOMIC OF THE DISTRICT WATERWAYS BENEFITS Districtwide, 2022

TOTAL ANNUAL ECONOMIC IMPACT \$21.6B

TOURISM SPENDING

\$16 Billion

generated annually from 5 million visitors



BOATER SPENDING

\$2.6 Billion

local boater spending from Registered Vessels



PROPERTY SALES VALUE

\$5.6 Billion

portion of property sales values attributed to ICW proximity



The Intracoastal and Okeechobee Waterways are critical to commerce throughout the state of Florida, supporting the mega-yacht industries, boat building, and shipping activities via Ports



The District's Waterways currently supports 236,576 jobs districtwide



FIND INVESTMENT

in the ICW of \$15.8 Million avoids lost revenue of \$1.2 Billion and 7,300 jobs



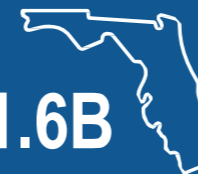
ANNUAL TAX BENEFITS

\$2.3B



FEDERAL TAX REVENUE

\$1.6B



STATE AND LOCAL TAX REVENUES



Registered vessels utilizing the ICW
216,072

Pleasure boating	115,853	
Fishing	65,561	
Sailing & other activities	18,481	
Watersports	16,177	

Contact Us

Info@AICW.org

Florida Inland Navigation District
1314 Marcinski Road
Jupiter FL 33477

(561) 627-3386

www.aicw.org

Mark Crosley - Executive Director
Janet Zimmerman - Assistant Executive Director
Chris Kelly - Deputy Director
Glenn Scambler, CPA - Finance Director
Ian Eyeington - Operations Director
Carly Cahur - Office Manager

