



Manson Construction Co.

Since 1905...

Frederick Paup, Chairman of the Board &
Executive Vice President

About Manson

- Established in 1905, Manson began as a small, family-owned Puget Sound marine pile driving business.
- Today, Manson thrives as an employee-owned company with a national presence offering a wide range of skills and services.
- Headquarters remain in Seattle, though we have expanded to include permanent facilities in Northern and Southern California, Louisiana, and Florida.
- “One foot in the water!”



History

- Manson began in 1905 with a single floating pile driver
- Early jobs included timber docks that served Puget Sound's Mosquito Fleet of steam passenger boats



Manson Core Values

- **Safety:** Creating an Incident and Injury Free culture through training, communication, work planning, hazard recognition, and accountability
- **People:** Treating our coworkers, clients, and business partners with respect and honesty
- **Ethics:** Practicing the highest standards of conduct at work and in our daily lives
- **Quality:** Committing to doing the job right
- **Leadership:** Leading with respect, professionalism, integrity, fairness, and accountability
- **Stewardship:** Conducting our work in an environmentally responsible and sustainable manner

Locations

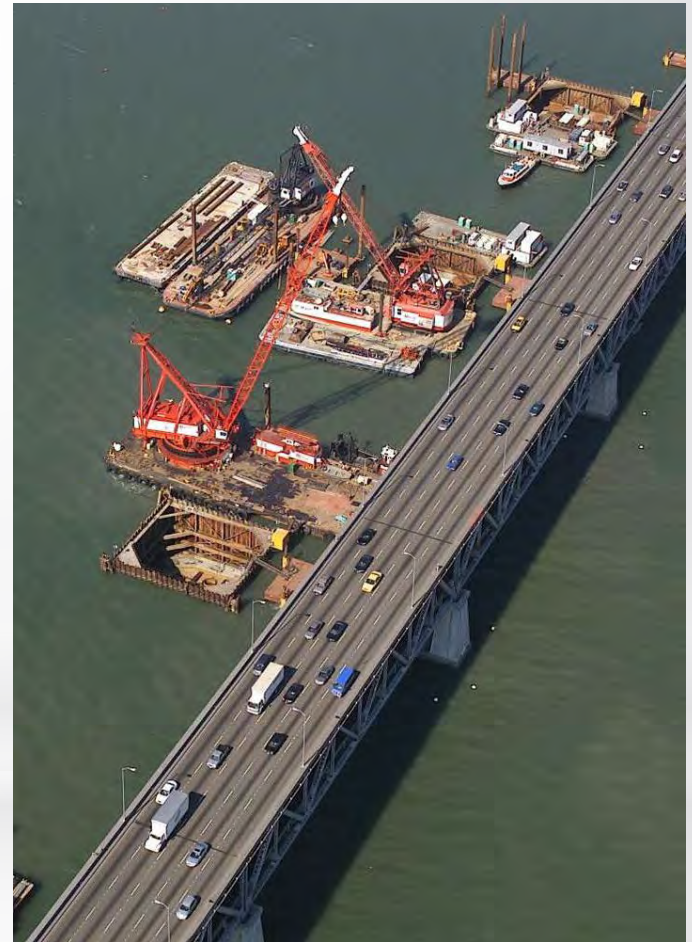


Equipment Fleet

- **Manson's Heavy Marine Equipment Fleet**
 - 30 Derrick and Spud Barges (Up to 1,000 Ton Capacity)
 - 31 Flat Barges
 - 21 ABS and Dump Barges
 - 4 Hydraulic Cutter Suction Dredges
 - 4 Trailing Suction Hopper Dredges
 - 32 Tug and Assist Boats

Capabilities

- Marine Construction
 - Bridges
 - Wharves and piers
 - Flood protection
 - Rock Placement
- Dredging
 - Mechanical, cutter suction and hopper
 - Maintenance, upland disposal, beach nourishment
- Offshore
 - Pipeline, outfall
 - Subsea cable
 - Oil and gas platforms



Bridges

Example Projects:

- WSDOT, Design-build Evergreen Floating Bridge and Landings, (2011-2015) \$586 million
- WSDOT, Manette Bridge Replacement (2010-2012) \$44 million
- MnDOT, St. Anthony Falls I-35W Bridge, (2007-2008) \$233 million
- Caltrans, San Francisco – Oakland Bay Bridge (2002-2008) \$1.04 billion



Wharves, Docks, Piers

Example Projects:

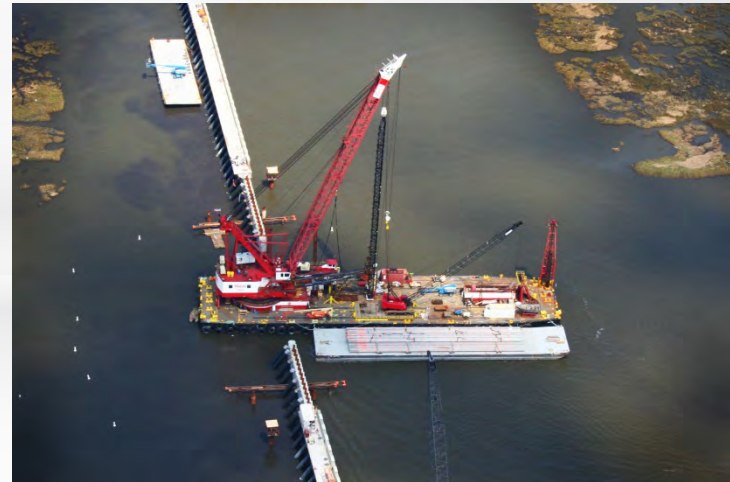
- Port of Long Beach, Wharf Backlands Redevelopment, Phase 1 at Piers D, E, & F (2011-2013) \$123 million
- Port of Long Beach, Wharf Backlands Redevelopment Phase 2 at Pier E (2011-2013) \$55 million
- Port of Tacoma, WUT Berth Extension (2010-2011) \$24 million
- Port of Los Angeles, TraPac Berths 145-147 (2008-2011) \$102 million



Storm Protection

Example Projects:

- Bayou Bienvenue Pile Foundation, Sill and Monolith, New Orleans, LA, (2010-2011) \$21 million
- Bush Canal Receiving Structure and Floodwall, LA, (2010-2011) \$12.5 million
- GIWW Bypass Gate Abutment Inner Harbor Navigation Canal, New Orleans, LA (2009-2010) \$28 million
- Lake Cataouatche Levee Construction (2007-2008) \$17 million, Avondale, LA
- MRGO Emergency Levee Construction, New Orleans, LA (2005-2007) \$21 million



Offshore Structures

Example Projects:

- IGBS Prototype Installation, ExxonMobil, Gulf of Mexico
- East Cameron Block Platform Installation, Maritech Resources, Gulf of Mexico
- VR 252 “I” Tri-pod Installation, Castex Offshore, Inc., Gulf of Mexico
- EI 315 “C” Tri-pod Installation, Tana Exploration, Gulf of Mexico



Pipelines and Outfalls

Example Projects:

- Transbay Cable Project (2009-2010) \$12 million, San Francisco Bay, CA
- Calleguas Municipal Water District, Hueneme Outfall Replacement, (2009-2010) \$15 million
- City of Austin, Texas, Water Treatment Plant No. 4, (2011-2012) \$61 million
- City of Mercer Island, WA, Sewer Lake Line and Pump off No. 4 Replacement (2009-2011) \$15 million



Marinas

Example Projects:

- Alamitos Bay Marina, Long Beach, CA (2011-2012)
- Elliot Bay Marina (1990-1991) \$18 million, Seattle, WA
- Carillon Point Marina (1988-1989) \$2.3 million, Kirkland, WA
- Sun Road Marina (1986-1987) \$2 million, San Diego, CA



Ferry Landings

Example Projects:

- South San Francisco Ferry Terminal Gangway and Float, (2010-2011) \$10 million
- South San Francisco Ferry Terminal Pier 9 Layover Floats (2010-2011) \$2.3 million
- Orcas Island Ferry Terminal Dolphin Replacement (2008) \$4.4 million, Orcas Island, WA
- Clinton Ferry Terminal Dock Expansion, (2002-2003) \$12 million



Cruise Ship Terminals

Example Projects:

- Port of Juneau Cruise Ship Berths, (2015-2017), \$53 million, Juneau, AK
- Freeport Harbour Berths 4 & 9, (2008-2009), \$12 million, Freeport, Grand Bahamas
- Berth IV Cruise Ship Terminal, (2007-2008), \$10 million, Ketchikan, AK



Navigation Dredging

Example Projects:

- Oakland Inner/Outer Harbor Maintenance dredging, CA (2010-2011) \$12 million
- Jacksonville Port Authority Maintenance Dredging, FL (2009-2011) \$ 15 million
- Galveston Harbor and Channels and Houston Ship Channel Maintenance Dredging, TX (2011-2012) \$9 million
- Ventura Harbor Maintenance Dredging, CA (2009-2011) \$7.4 million



Environmental Restoration

Example Projects:

- Oakland Harbor Navigational Improvements/Hamilton Wetlands Restoration Project (2006-2010) \$165 million contract, Oakland Harbor, CA
- Lake Mechant Land Bridge Restoration, LA (2008-2009) \$32 million
- Sand Berm Construction, LA, (2010) \$15 million



Environmental Remediation

Example Projects:

- Thea Foss & Wheeler-Osgood Waterways Remediation, (2003-2005), \$58M, Tacoma, WA
- Middle Harbor Waterway Remediation, (2003-2004), \$8M, Tacoma, WA
- Port Hueneme Confined Aquatic Disposal Facility, (2008-2009), \$12M, Ventura County



Beach Renourishment

Example Projects:

- Gulf Shores Beach Renourishment, (2012-2013), Orange Beach, AL
- Port St. Joe – Beach Construction (2008-2009) \$21M
- Siesta Key, FL Beach Renourishment, (2006-2007) \$9.3 M
- Fort Pierce Beach Fill, FL, (2007) \$3.4 M
- Loch Arbour to Deal, NJ, (2015), \$38 M



International

Example Projects:

- Manzanillo, Mexico, 2012, LNG Channel Widening and Deepening, Boskalis & Dredging International
- Melones Island, Panama, 2011, Pile Driving, Intercoastal Marine Inc.
- Grand Bahamas, The Bahamas, 2008-2009, Cargo Berth Construction, Freeport Harbour Company
- Great Guana Cay, The Bahamas, 2007-2008, Entrance Channel Dredging, Passerine at Abaco Holdings, Ltd
- Sakhalin Island, Russia, 2006, Dredging and Marine Construction, Exxon Neftegas, Ltd

Derricks & Dredges



E.P. Paup

Maximum Lifting Capacity 1,000 Tons



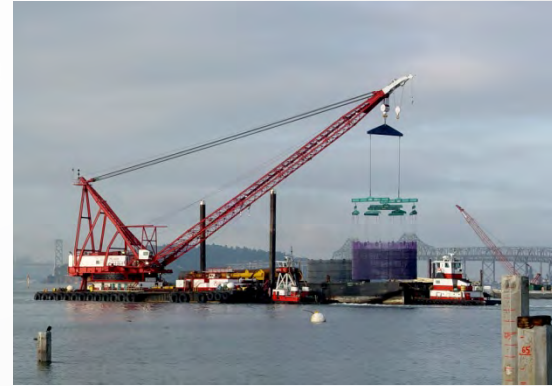
Wotan

Maximum Lifting Capacity 500 Tons

Derricks & Dredges



Haakon
Maximum Lifting Capacity 400 Tons



Derrick 24
Maximum Lifting Capacity 400 Tons



Valhalla
Maximum Lifting Capacity 350 Tons



Njord
Maximum Lifting Capacity 200 Tons

Derricks & Dredges



Hagar

Maximum Lifting Capacity 135 Tons



Vulcan

Maximum Lifting Capacity 140 Tons



Viking

Maximum Lifting Capacity 150 Tons



Valkryie

Maximum Lifting Capacity 135 Tons

Derricks & Dredges



Scandia

Maximum Lifting Capacity 135 Tons



Southman

Maximum Lifting Capacity 100 Tons



Andrew

Maximum Lifting Capacity 80 Tons



Einar

Maximum Lifting Capacity 75 Tons

Derricks & Dredges



Freya

Maximum Lifting Capacity 67 Tons



Derrick 8

Maximum Lifting Capacity 50 Tons



Derrick 6

Maximum Lifting Capacity 50 Tons



Derrick 3

Maximum Lifting Capacity 50 Tons

Derricks & Dredges



Vasa

Maximum Lifting Capacity 140 Tons



Acadia

Maximum lifting capacity 50 tons

Hopper Dredges



Glenn Edwards
13,000 cubic yards



Bayport
5,000 cubic yards

Hopper Dredges



Newport
4,000 cubic yards



Westport 1,800 cubic yards

Cutter Suction Dredges



H.R. Morris
27" diameter



Frank Bechtolt
18" diameter

Cutter Suction Dredges



Leonard J – 24”



Bob Lofgren – 26”



Thank you! Gracias!

Frederick Paup, Chairman of the Board &
Executive Vice President

www.MansonConstruction.com

Inquiries:

proposals@mansonconstruction.com